

A Team Approach to Incorporate Competencies

Annamarie Lyles, PhD, RN

Joan Perl, MSN, RN, NI-BC

Kathi Katz, PhD, RN, CNE

Brittany Hay, DNP, APRN, ANP-BC, FNP-BC



WHERE NURSING TRAILBLAZERS BELONG.

1

Objectives/Outcomes

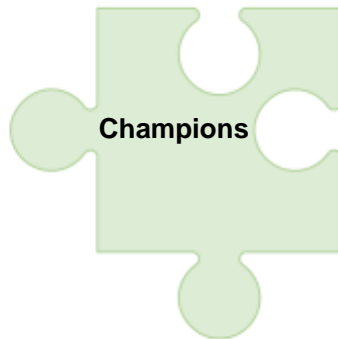
Discuss the collaborative strategy used to transform the 2021 AACN Essentials into an undergraduate nursing program.

- Connecting the puzzle pieces
 - Champions
 - Communication
 - Timeline
 - Resources



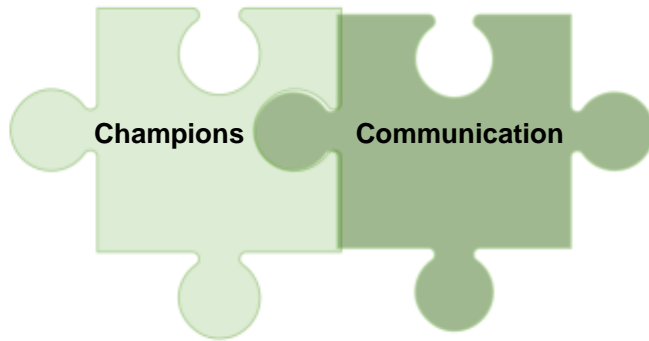
WHERE NURSING TRAILBLAZERS BELONG.

2



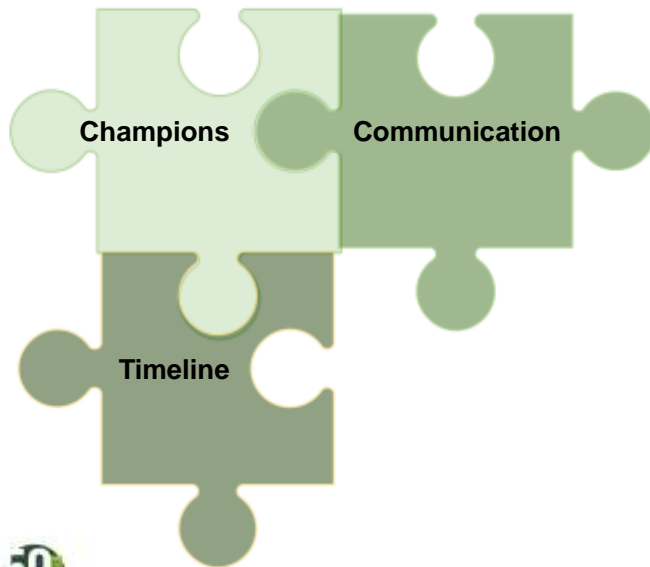
Champions

- Steering Committee
 - Led by Essentials Champion
 - Includes undergraduate (UG) and graduate faculty and leadership
- Sub committees
 - UG Steering Champions
 - UG CBE Champions
 - DEI Champions



Communication

- Key terms
- Resources to guide process
- Repository to store resources, materials, and presentations
- Retreats



Timeline

- Begin with end in mind

Summer 2026

Timeline

- Begin with end in mind
- Flowchart Process Model

Course Revisions with Essentials



JP KK 7 16.23 High-Level Flowchart for Course Revisions with Essentials



WHERE NURSING TRAILBLAZERS BELONG.

11

Timeline

- Begin with end in mind
- Flowchart Process Model
- Curriculum revision timeline



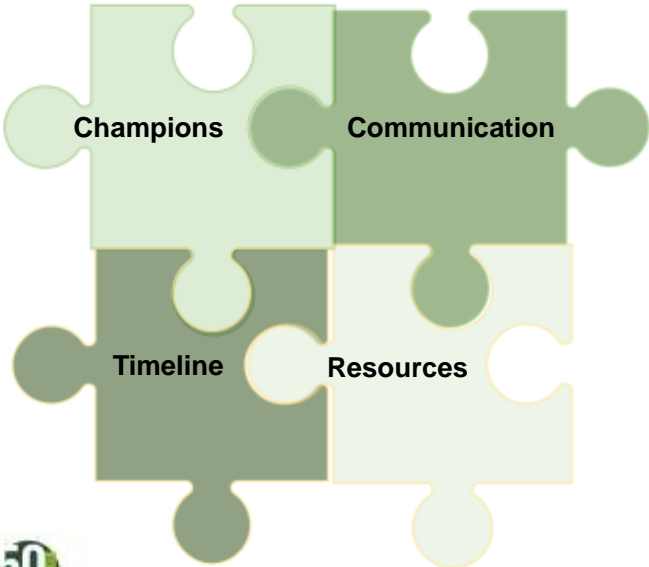
WHERE NURSING TRAILBLAZERS BELONG.

12

Course Revision Timeline

	Level 1 Courses	Level 2 Courses	Level 3 Courses	Level 4 Courses
Begin Revisions	April 2024	July 2024	Oct. 2024	Dec. 2024
Step 1 approval	July 2024	Oct. 2024	Dec. 2024	Mar. 2025
Step 2 approval	Oct. 2024	Dec. 2024	Mar. 2025	June 2025
Step 3 approval	Dec. 2024	Mar. 2025	June 2025	Sept. 2025
Begin Teaching	Summer 2025	Fall 2025	Spring 2026	Summer 2026

Includes all courses in program and approvals needed



WHERE NURSING TRAILBLAZERS BELONG.

Resources

- Begin with end in mind
- Revision of End of Program Learning Outcomes
 - Expected competencies of graduates
 - Guided by new 10 domains of 2021 AACN Essentials
- Crosswalk of current courses
- Gap analysis
- Created the revised Crosswalk



WHERE NURSING TRAILBLAZERS BELONG.

15

Resources

- What resources can the champions create to guide faculty on this journey?
 - Crosswalk
 - Roadmap Tool
 - Course Syllabus Revision Worksheet



WHERE NURSING TRAILBLAZERS BELONG.

16

Crosswalk

- Competency scaffolding
 - 1 – Introduce
 - 2 – Reinforce
 - 3 – Master
- Reviewed sub competencies and mapped them
 - Need to differentiate between entry and advanced levels
- Spread out how measure competencies/sub competencies
- Bundle
 - For signature assessments to measure competency/sub competency
 - Desired outcomes for learners
 - Demonstrate can do with what they know
 - Planned and repeated practice



WHERE NURSING TRAILBLAZERS BELONG.

17

Entry-Level Professional Nursing Education Crosswalk

AACN Essential Level I Entry-Level Education			Level	1	2	3	4	5	6	7	8	9	10	11	12	13	14	15	16	17	18	19	20	21	22	23	
Domains	Competency statements	Sub-competency statements	Clinical Hours																								
Domain 1: Systems-Based Practice		1.1a Describe organizational structures, mission, vision, philosophy, and values.																									
Domain 2: Responding to and Improving the Health Care System	2.1 Apply knowledge of nursing to work effectively across the continuum of care.	2.1a Discuss the relationship of health systems, ecosystems, and communities. 2.1b Differentiate between direct and indirect care. 2.1c Recognize the role of professional nursing organizations that impact care coordination and structure of care.																									
Domain 3: Clinical Judgment	3.1a Assess the patient's health status, including physical, psychosocial, and cultural aspects of care. 3.1b Apply critical thinking skills to evaluate patient data, identify strengths and weaknesses, and determine patient needs. 3.1c Develop a plan of care based on the patient's assessment and needs.	3.1a Assess the health status of individuals, families, communities, and populations. 3.1b Identify the unique needs of patients and social determinants of health. 3.1c Identify the impact of healthcare cost and patient's health on the delivery, access, and quality of care.																									
Domain 4: Quality Improvement and Patient Safety	4.1a Implement evidence-based practice changes to improve patient safety and quality of care. 4.1b Apply nursing research to practice to improve patient safety and quality of care. 4.1c Apply professional nursing standards of practice to improve patient safety and quality of care.	4.1a Apply nursing research to practice to improve patient safety and quality of care. 4.1b Apply professional nursing standards of practice to improve patient safety and quality of care. 4.1c Identify the impact of nursing research on practice, leadership, and patient safety on the nursing profession.																									

Competency scaffolding
1 – Introduce
2 – Reinforce
3 – Master

Signature Assessments

- Bundle
- Threaded throughout curriculum
- Assessed over time...multiple methods...multiple assessors
- Can measure multiple competencies/sub competencies
- Not majority in one course



WHERE NURSING TRAILBLAZERS BELONG.

18

Resources

- Roadmap Tool
 - Based on Crosswalk to represent the course level
 - Way to outline how peers can collaborate
 - Collaboration with graduate counterparts to align with advanced level sub competencies



WHERE NURSING TRAILBLAZERS BELONG.

Roadmap Tool

AACN 2021 Essentials Domains, Competencies, & Sub-Competencies Roadmap																
Roadmap for: NUR3225																
NUR 3225	Domain	Competencies	Sub-Competencies	Sub-Competency Placement in UG Courses												
				NUR 3225	NUR 3125	NUR 3825	NUR 3066	NUR 3026	NUR 4555	NUR 4467	NUR 4227	NUR 4185	NUR 4827	NUR 4888	NUR 4655	NUR 4957
DOMAIN 1	Knowledge for Nursing Practice	1.5 Demonstrate clinical judgment founded on a broad knowledge base.	1.5a Demonstrate clinical reasoning.	2	2	1						1				
			1.5b Integrate nursing knowledge (theories, multiple ways of knowing, evidence) and knowledge from other disciplines and inquiry to inform clinical.	2	2	1						3				
			1.5c Incorporate knowledge from nursing and other disciplines to support clinical.	2	2	1								1		



WHERE NURSING TRAILBLAZERS BELONG.

Resources

- Course Syllabus Revision Worksheet
 - Changes
 - Course Description
 - Course Objectives
 - Competency Statements/Student Learning Outcomes
 - Outline
 - Concepts (8)
 - Spheres of Care (4)
 - Reviewed by Curriculum Committees
 - Package for approvals
 - Syllabus
 - Roadmap Tool
 - Course Syllabus Revision Worksheet



WHERE NURSING TRAILBLAZERS BELONG.

Course Syllabus Revision Worksheet

Course Syllabus Revision Worksheet

Course Number and Title:

Course Lead:

Curriculum Revision/Exploration Partner (s):

Champion Coordinator (s)

Tentative for completion:

Current Course Title Revised Current Course Title

Current Course Description in undergraduate course catalogue Revised Course Description (250 Characters Maximum)

Current Course Objectives (COs) and/or new if needed Revised COs (Broad, reflect what faculty will do. Note aligned 2023 AACN Essential IX competency)

Current Topical Outline Revised Topical Outline

Current Student Learning Outcomes (SLOs) addresses if needed	Revised SLOs - Competency Statements/SLOs (C/S/SLOs) (COs) (SLOs) reflect what students will do! Competency scaffolding (C/S) 1 = Introduction: (Know/Comprehend) 2 = Reinforcement: Can do something with knowledge (Apply/Analyze) 3 = Mastery: Fully integrate into practice (Synthesize/Evaluate)	Aligned Course Objectives (COs) and Essential IX competencies (i.e., C01, 2, 6, 5, 7, 3)	Align with total of program learning Outcomes (PLOs)
1.	1. C/S	SLO-competencies to be addressed on course map	IPLO 2-10

Concepts	NACLEX Blueprint (Align to the NACLEX Blueprint) Next Generation NCLEX RN Test Plan Effective April 2023 https://www.ncsbn.org/2023/04/2023-RN-Test-Blueprint-Final-FINAL.pdf	Spheres of Care
A concept is an organizing idea or a mental abstraction that represents important areas of knowledge. 16 Concepts: Clinical judgment,		All learners in entry-level professional nursing education programs (pre-licensure and post-licensure) (degree completion) programs will engage in direct patient care learning activities (e.g.,



Course Revisions with Essentials



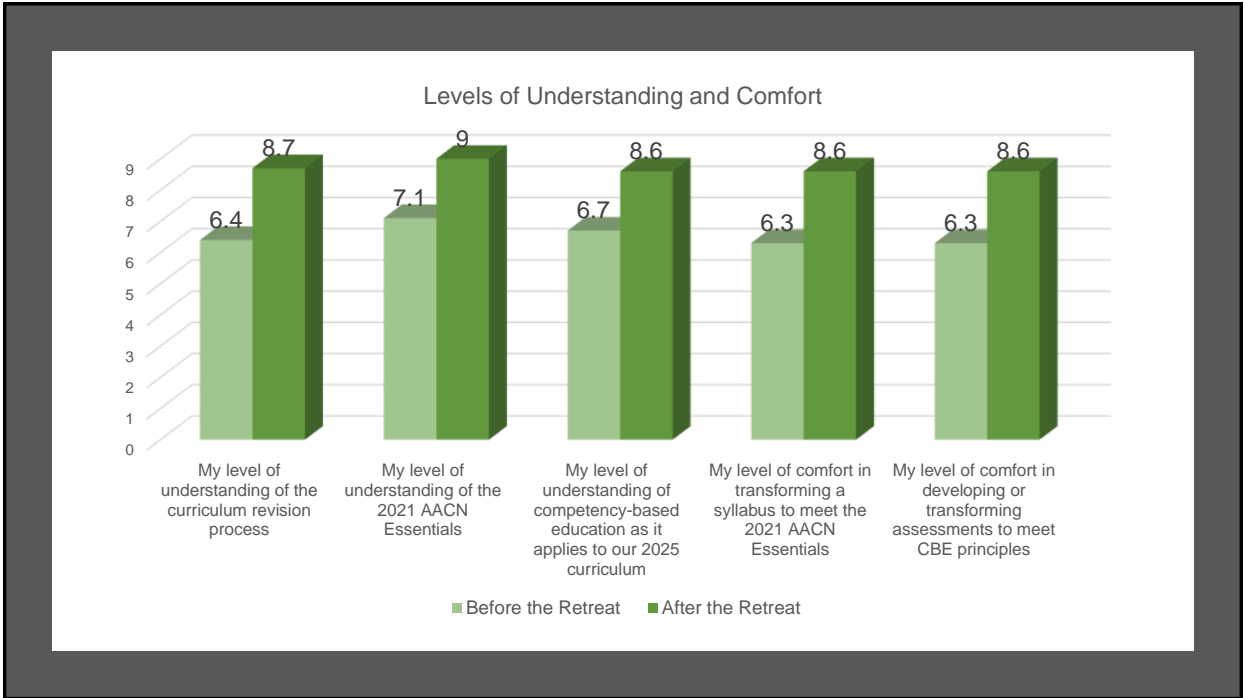
Activities to Support



JP KK 7.16.23 High-Level Flowchart for Course Revisions with Essentials

Bring the team back together

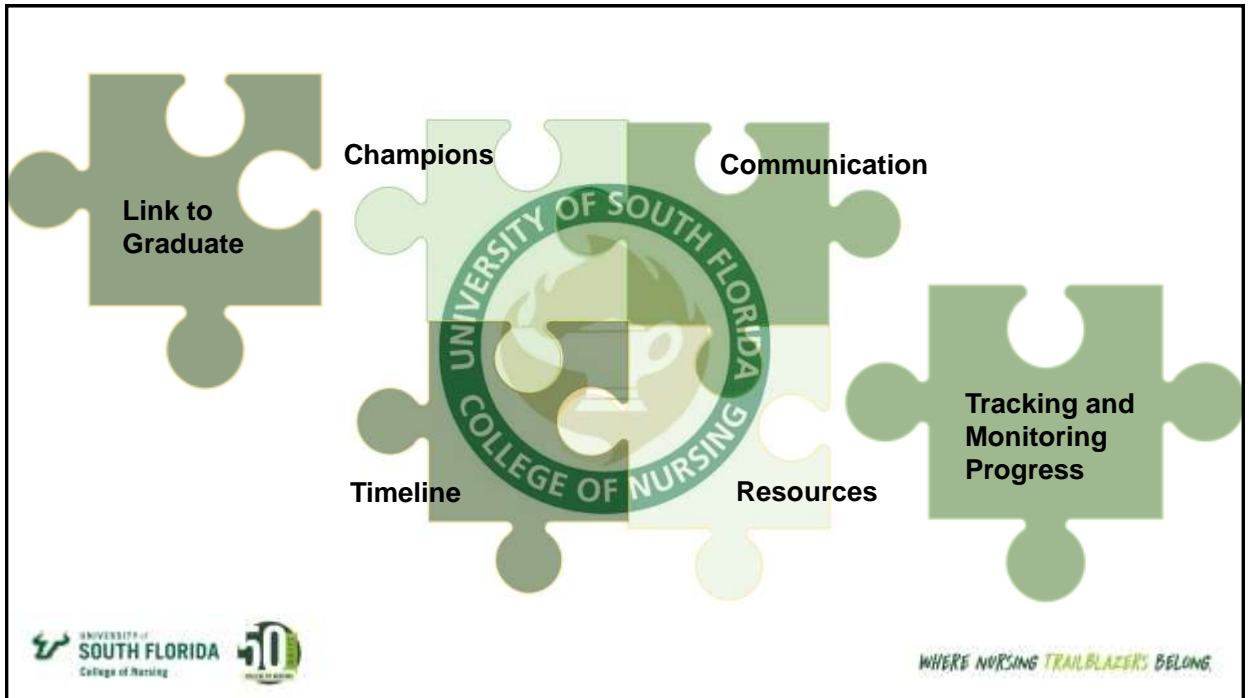
- Curriculum retreat - operationalize
 - Present resources - copies
 - Revision process
 - Transform syllabi to include competency statements/student learning outcomes
 - Begin to develop signature assessments
- Survey



25



26



27

Summary

- Scaffolding to guide the faculty on this journey
 - Presentations to **introduce** 2021 AACN Essentials
 - Interactive retreats and meetings to **reinforce** processes
 - Resources for faculty to **master** transformation
- Continue to connect the puzzle pieces
 - A story of our journey
 - Many ways to transform a program
 - Continuous process improvement

28

References

American Association of Colleges of Nursing. (2023). Guiding Principles for Competency-Based Education and Assessment. Accessible online at <https://www.aacnursing.org/Portals/0/PDFs/Essentials/Guiding-Principles-for-CBE-Assessment.pdf>

American Association of Colleges of Nursing. (2021). The Essentials: Core competencies for professional nursing education. Accessible online at <https://www.aacnursing.org/Portals/42/AcademicNursing/pdf/Essentials-2021.pdf>

Questions

