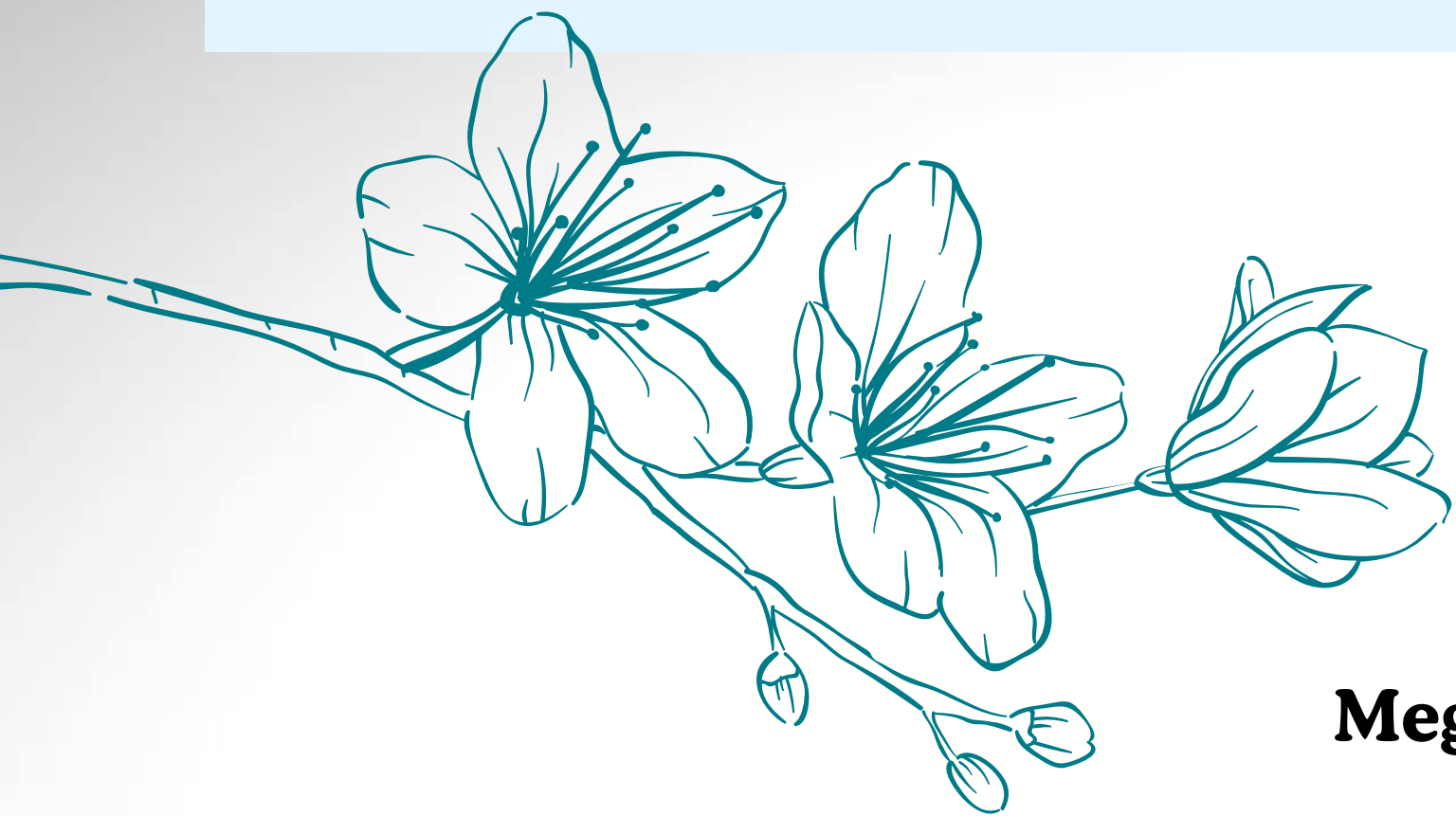


Information Session on ELNEC

Summer 2026 Faculty Workshop

January 28, 2026 Webinar



Andra Davis, PhD, MN, RN

Associate Professor

University of Portland

School of Nursing and Health Innovations

Megan Lippe, PhD, MSN, RN, ANEF, FPCN, FAAN

Associate Professor

UT San Antonio

Disclosures

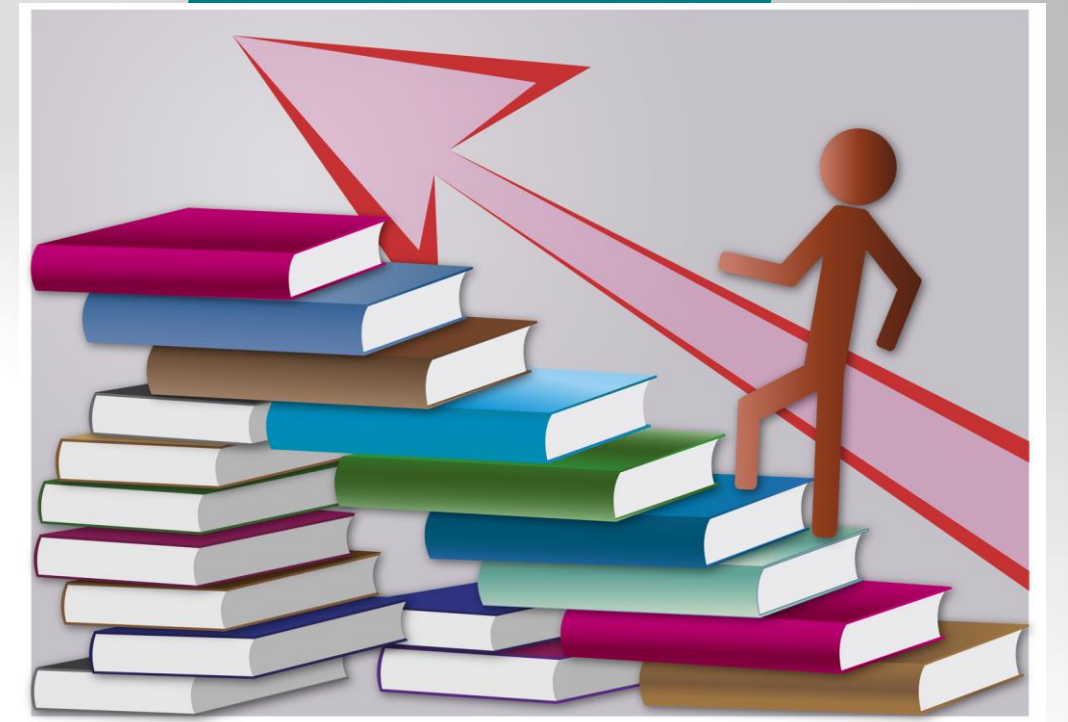


- Drs. Davis and Lippe, Co-Investigators with the End-of-Life Nursing Education Consortium (ELNEC)
- Grant-funding through Cambia Health Foundation, to support the advancement of palliative care education
- Workshop funded by Cunniff Dixon Foundation



Objectives

- Describe the Faculty Development and Leadership in Palliative Care Workshop: For Undergraduate and Graduate Faculty
- Provide an overview of the application process and participant expectations.
- Highlight past webinar feedback



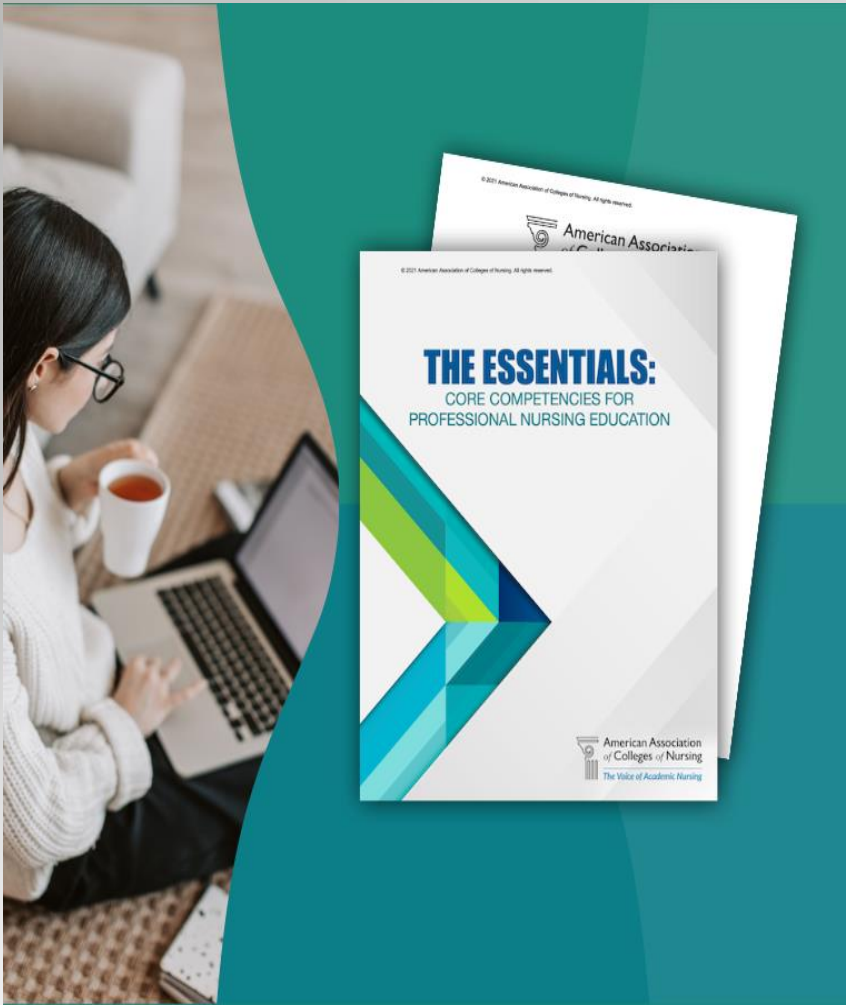




Seeing
things
differently?

Palliative and End-of-Life Care

Guiding Documents



Wellness, Disease Prevention

Chronic Illness Management

Spheres of Care

**Regenerative/Restorative
Care**

**Hospice/Palliative/Supportive
Care**

**LEVEL I
Entry-Level**



**LEVEL 2
Advanced-Level**

(AACN, 2021)

Guiding Documents

CARES (2ND ED.)

Competencies And Recommendations for Educating
Undergraduate Nursing Students

G-CARES (2ND ED.)

Graduate- Competencies And Recommendations for
Educating Undergraduate Nursing Students



01

**Competency-
based Education:
Application to
Palliative Care**

02

**Programmatic/
Strategic
Planning**

03

**Evaluating
Student
Learning**

04

**Creating the
Learning
Environment**

05

**Experimental Labs - Pain &
Symptoms; Grief; Intro to
PC; Communication; Final
Hours; Leadership**



PARTICIPANTS

- 2024: 107 participants; 38 states
- 2025: 119 participants; 37 states + online
 - 82 undergraduate track
 - 35 graduate track





What's
Your
WHY?

- 1. Curriculum Development**
- 2. Teaching Strategies**
- 3. Networking with Faculty**



Workshop Outcomes



- Comfort in Teaching Palliative Care Content**
- Competence in Teaching Palliative Care Content**
- Ability of Students to Learn Palliative Care Content*
- Responsibility of Nurses to Provide Palliative Care in Practice**
- Preparation to Teach Palliative Care Concepts**
- *Increases sustained across 12 months*

(* significant $p < .05$; ** significant $p < .001$)





WORKSHOP EVALUATIONS

Metric	2024	2025
How applicable and useful will the materials/resources be to your teaching and evaluation (1-5)?	4.95 (.26)	4.81 (.47)
Did the information provided on palliative care in nursing education engage and challenge your thinking (1-5)?	4.89 (.31)	4.76 (.53)
To what extent did the workshop meet the objectives (1-3)?	2.97 (.21)	2.94 (.2)

Scales:

1-5 (1 = Not at All; 5 = Extremely)

1-3 (1 = Not at All; 3 = Completely)

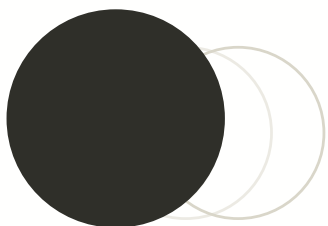




LONGITUDINAL CURRICULAR OUTCOMES

- Advance Care Planning**
- Caring for Caregivers*
- Communication**
- Cultural Considerations
- End-of-Life Care**
- Ethical and Legal Considerations**
- Loss Grief and Bereavement**
- Pain Assessment/ Management**
- Patient- and Family-Centered Care*
- Preparing the Patient and Family for Death**
- Principles of Palliative Care**
- Psychological and Psychiatric Aspects**
- Similarities and Differences in Palliative and Hospice Care**
- Social Aspects*
- Spiritual Religious and Existential Aspects*
- Symptom Assessment/ Management*

(* significant $p < .05$; ** significant $p < .001$)



Despite my expertise in PC nursing and education I learned a lot about new approaches or ideas that I can share with my colleagues. I would say that today's content was fresh and invaluable

Exceeded my expectations;
So many ideas to implement;
My mind is full of new ideas
and possibilities

Thank you for all the resources
to effectively provide the
knowledge and practice real skills
for our nursing students



Carrie Cormack, DNP
Associate Professor
Medical University of South Carolina



Andra Davis, PhD
Associate Professor
University of Portland



Betty Ferrell PhD
Director of Nursing Research & Education
Professor City of Hope
ELNEC Principal Investigator



Theresa Jizba, DNP
Assistant Professor Creighton University
Omaha NE



Dr. Megan Lippe, PhD
Associate Professor
UT San Antonio



Jacquelyn (Jacqui) McMillian-Bohler, PhD
Associate Dean for Academic Innovation and Evaluation
Assistant Clinical Professor Duke University
Durham, NC

Who Should Apply

- Full-time faculty employed in a school/college of nursing. Up to two faculty from the same institution will be accepted.
- Teaching within an Undergraduate program or Graduate program
- Funding will support 100 participants
- **For individuals who participated in past workshops, we kindly request that you refrain from applying unless you plan to enroll in a different track.**

For more information, please visit:

<https://www.aacnnursing.org/el nec/el nec-faculty-corner/upcoming-events>
or email ELNEC@coh.org

Application Checklist

General Information

- a. Email/phone contact
- b. Demographic information

Statement of Interest and three goals

- a. Briefly describe in 250-300 words
 - i. Your current engagement in palliative care education at your school;
 - ii. Why you are interested in participating in this faculty development workshop;
 - iii. How you will apply the information within your school
 - b. Please identify three goals related to participation the focus of this workshop. Your goals can be refined during the workshop. In addition, at six- and twelve-months post-workshop, you will be asked to evaluate progress in accomplishing goals.
3. Letter of Support – program director or dean
 - a. Support letter to address the school's commitment to advancing palliative care education within the undergraduate program.

Key Benefits

- Free registration
- Continuing Education Units for Nursing Continuing Professional Development
- Stay at Univ of Portland dorms for up to 3 nights
- Course materials
- Breakfast & lunch for both days
- Network with other nursing faculty across the country to collaborate and envision palliative care education as a core component of education.
- Discover new resources for palliative care competency-based teaching and evaluation.
- Share your exemplary work in palliative care education with others.
- Return to your school with refined goals and deliverables to enrich palliative care education.

Thank you to our sponsors: ELNEC, City of Hope, the University of Portland School of Nursing and Health Innovations, and the Cunniff Dixon Foundation.





Longitudinal Evaluation of Impact

- A Priori Goals
- Six and twelve-month surveys
 - Process and outcomes of workshop operationalized at respective institutions

Workshop Application



Faculty Corner







- Fostered connection and creativity
- Collaborative and interactive approach to shared curricular challenges
- Modeled a supportive approach towards lifelong learning among faculty
- Contributes to advancing palliative care and nursing education

References and Resources

American Association of Colleges of Nursing. (2021). *The Essentials: Core competencies for professional nursing education*. American Association of Colleges of Nursing.
<https://www.aacnnursing.org/Portals/42/AcademicNursing/pdf/Essentials-2021.pdf>

Davis, A., Lippe, M., Glover, T., McLeskey, N., Shillam, C., & Mazanec, P. (2021). Integrating the ELNEC Undergraduate curriculum into nursing education: Lessons learned. *Journal of Professional Nursing*, 37(2), 286-290. doi: 10.1016/j.profnurs.2020.12.003

[ELNEC Faculty Corner](#)

Lippe, M. P., & Davis, A. (2023). Development of a primary palliative nursing care competence model and assessment tool: A mixed-methods study. *Nursing Education Perspectives*, 44(2), 76–81. doi: 10.1097/01.NEP.00000000000001056

Lippe, M., Davis, A., Stock, N., Mazanec, P., & Ferrell, B. (2022). Updated primary palliative care competencies and alignment with AACN Essentials: Resources for nursing faculty. *Journal of Professional Nursing*, 42, 250-261. doi: 10.1016/j.profnurs.2022.07.012