



American Association  
*of Colleges of Nursing*

**Leadership for Academic  
Nursing Program**

**Directory of Fellows  
2009-2010**

## **2009-10 LEADERSHIP FOR ACADEMIC NURSING PROGRAM DIRECTORY**

In 2001, the Helene Fuld Health Trust awarded an academic leadership grant to the American Association of Colleges of Nursing in order to develop an executive leadership institute for new and aspiring deans. After four grant funded classes of fellows, the program was redesigned and became self-sustaining in 2006, but retained the rigorous and competitive selection process and the excellent leader development activities characterized by the first four years.

This professional development experience includes assessment and evaluation of leadership skills, identification of particular approaches that enhance leadership success, identification of key partnerships and strategic networking, and consultation to achieve long-term goals. In response to the increasing seniority of nursing academic leaders, this program was designed to prepare a more diverse, younger pool of deans/directors and other senior leaders for nursing higher education programs.

In August 2009, the 2009-10 Fellows attended a five-day workshop in Kansas City, where they participated in intensive classes and exercises related to successful academic leadership. The fellowship year also includes opportunities for Fellows to apply concepts and strategies from their professional development activities, confer with colleagues in the fellowship, and engage in a mentorship opportunity with an experienced nursing academic executive, working to accomplish specific, individualized leader development goals.

This directory highlights the 2009-10 Fellows. Representing a variety of backgrounds, experiences, and abilities, these Fellows have enhanced their skill as academic leaders, and have the necessary tools to serve even more competently and confidently as leaders in academic nursing.

**LEADERSHIP FOR ACADEMIC NURSING PROGRAM DIRECTORY**

---

**Deborah Allen, PhD, FNP-C, BC**

*Assistant Professor  
School of Nursing  
Georgia Southern University  
250 Forest Drive  
Statesboro, GA 30458  
debbieallen@georgiasouthern.edu  
912.478.5770*



Dr. Allen is an Assistant Professor in the School of Nursing at Georgia Southern University. She has practiced in Pediatric and Urgent Care settings as a Nurse Practitioner and worked in the Pediatric as well as Med-Surg areas of nursing prior to obtaining her MSN and NP degree. She has 6 years of in both graduate and undergraduate nursing programs at various universities. Dr. Allen earned an Associate's Degree from Trident Technical College in N. Charleston, SC., her Bachelor's degree from Liberty University in Lynchburg, VA, her Master's degree from Old Dominion University in Norfolk, VA, and her Ph.D. in Nursing from Hampton University, Hampton, VA. Her primary program of research focuses on chronic illnesses and disabilities in adults and children and in the Scholarship of Teaching and Learning (SoTL) activities. Dr. Allen is currently a reviewer for AJNP: The American Journal for Nurse Practitioners. For the last three years, Dr. Allen has served on the Scholarship of Teaching and Learning Faculty Learning Committee at Georgia Southern and helped develop a SoTL plan for the University.

---

**Mary Lee Barron, PhD, APRN, FNP-BC**

*Associate Professor; Director, Master's and DNP Programs  
School of Nursing  
Saint Louis University  
3525 Caroline Mall  
St. Louis, MO 63104  
barronml@slu.edu  
314.977.8978*



Dr. Barron is an Associate Professor of Nursing at Saint Louis University School of Nursing and serves as the Director of the Masters and Doctor of Nursing Practice Programs. Dr Barron earned her Diploma in Nursing at the Jewish Hospital School of Nursing, a Bachelor's degree at Saint Louis University, a Master's degree at University of Missouri-Columbia, and a PhD at Saint Louis University. She is certified as a Family Nurse Practitioner with a part-time primary care practice and has expertise in Maternal-Newborn Nursing and Women's Health, where she has practiced and taught for over 30

years. This includes directing the Saint Louis University Nursing Center for Fertility Education in which Natural Family Planning education, direct patient services, and research are ongoing. Her research interests include influences on menstrual cycle variability and Preconception health. Dr. Barron is currently a reviewer for *MCN: The American Journal of Maternal-Child Nursing*. She is a member of AWHONN, Sigma Theta Tau International, and Alpha Sigma Nu, the Jesuit Honor Society.

---

**Roger D. Carpenter, PhD, RN**

*Clinical Assistant Professor and Chair  
Department of Health Restoration  
School of Nursing  
West Virginia University  
Robert C. Byrd Health Sciences Center  
6621 Health Sciences South  
P.O. Box 9620  
Morgantown, WV 26506  
rcarpenter@hsc.wvu.edu  
304.293.1404*



Dr. Carpenter is currently a Clinical Assistant Professor and Chair, Department of Health Restoration in the School of Nursing at West Virginia University in Morgantown, West Virginia. He obtained his BSN from Kent State University, MSN from Case Western Reserve University, and PhD from West Virginia University. His clinical expertise is in Medical/Surgical Nursing. Teaching experiences include undergraduate and graduate level students. He demonstrates teaching expertise in adult nursing, pathophysiology, chronic illness care, and nursing theory. His research interests include adherence to diet and exercise in adults, focusing on predictors of adherence with the goal of developing interventions for nurses to take to practice. His research efforts are to promote wellness among community-dwelling older adults.

---

**Cathleen A. Collins, PhD, RN, CNE**

*Assistant Professor  
Department Chair, Non-Traditional Undergraduate Nursing  
Studies  
Anita Thigpen Perry School of Nursing  
Texas Tech University Health Sciences Center  
3601 4<sup>th</sup> Street, STOP6264  
Lubbock, TX 79430  
Cathie.collins@ttuhsc.edu  
806.743.2730 x244*



Dr. Collins is the Department Chair for Non-Traditional Undergraduate Nursing Studies for the Texas Tech University Health Sciences Center Anita Thigpen Perry School of

Nursing. Dr. Collins earned her Doctor of Nursing degree from Texas Woman's University in 2008, her Master of Science in Nursing from the University of Texas at El Paso in 1998, and her B.S.N. from Texas Tech Health Sciences Center in 1995. She has taught at Texas Tech since 1999. She currently teaches Acute Care Nursing in the Second Degree Program, as well as Theories and Therapies for graduate students and a genomics elective for the undergraduate and graduate programs. Prior to joining the faculty at Texas Tech, Dr. Collins served as the Quality Improvement Director at Hospice of El Paso. Dr. Collins' nursing practice specialties are hospice and palliative care and genomics. Her scholarship centers on nursing education research, particularly incorporating genomics into the nursing curriculum, second degree students, and interventions to increase retention of underrepresented and minority nursing students. She is also interested in studying effective online instruction for nursing students. Dr. Collins received the TTUHSC President's Excellence in Teaching Award in 2007 for her innovative online teaching methodologies. Dr. Collins is a member of the American Nurses Association and Sigma Theta Tau. She is also the 2010 Chair for the AACN Instructional Leadership Network.

---

**Judy A. Didion, PhD, RN**

*Dean and Chair*

*School of Nursing*

*Lourdes College*

*6832 Convent Blvd.*

*Sylvania, OH 43560*

*jdidion@lourdes.edu*

*419.517.8905*



Dr. Didion began her career as a diploma school nursing graduate. She completed her BSN at the University of Toledo in 1981 and her MSN in 1984 at the University of Texas Health Science Center in Houston. While working in ICU and teaching student nurses in Texas and New Jersey in the early 1980's, she saw firsthand the suffering of those afflicted with HIV/AIDS. As a result, she shifted her career to a public health perspective. When she returned to Ohio in 1987, she began to work with local public health agencies, schools and hospitals with HIV and teen pregnancy prevention programs. She completed her PhD in nursing at Duquesne University and focused her research on male involvement in adolescent pregnancy prevention. She has been involved in the national Healthy Teen Network, APHA and local/regional HIV and adolescent health coalitions. Dr. Didion concurrently pursued a career in nursing academics and was a founding faculty for a RN-BSN completion program, generic BSN program, second degree MSN entry level program and a traditional MSN program. Dr. Didion has presented nationally and internationally and published in numerous journals. She is currently an Associate Professor and Dean for Lourdes College School of Nursing

**Phyllis J. Eide, PhD, RN, MPH, MN**

*Associate Professor of Nursing  
College of Nursing  
Washington State University  
P.O. Box 1495  
Spokane, WA 99210  
eide@wsu.edu  
509.324.7246*



Dr. Eide received her BSN degree from Pacific Lutheran University ('78), a MPH ('85) and MN ('86) from University of Hawaii at Manoa, and her PhD from University of Colorado in 2000. Before entering academia in 1992, she worked in a wide variety of community settings, including positions in public health (Washington state and Hawaii), migrant school nurse, Associate Director of Hawaii Nurses' Association, and vocational rehabilitation. Dr. Eide joined the newly developed BSN program at University of Hawaii at Hilo in 1992, and subsequently became a member of the faculty at WSU/College of Nursing in 2002, where she is currently an Associate Professor. Dr. Eide is Lead Faculty for the masters' level community health program, and has been elected Chair of the Faculty Organization, assuming that role in 2010-2011. Her primary practice and research interests are rural health, global climate change, and public health.

---

**Laura A. Fillmore, DNP(c), MSN, RN**

*Associate Director  
School of Nursing  
Touro University  
874 American Pacific  
Henderson, NV 89014  
laura.fillmore@tun.touro.edu  
702.777.4764*



Dr. Fillmore Graduated from Madonna University in 1985 and has worked in many areas of nursing. Her primary area of practice is Adult Health and she has been involved in in-patient and out-patient settings. She began in nursing education as clinical adjunct and the skills lab, and has been in full-time nursing education since 2004. She has worked with two separate programs to gain full-approval from the state board of nursing; developed an RN to BSN program; converting face-to-face courses to fully online programs; and overseen undergraduate and graduate nursing programs. She also is involved within the State nursing organizations to develop a group for nursing excellence within the state of Nevada. She participates at the state and local level to promote nursing education and quality in practice.

**Linda Finch, PhD, APRN**

*Associate Dean, Director of Undergraduate Programs  
Loewenberg School of Nursing  
University of Memphis  
633 Normal Street  
Memphis, TN 38152  
lfinch@memphis.edu  
901.678.3087*



Dr. Finch is an Associate Professor and Associate Dean/Director of Undergraduate Programs in the Loewenberg School of Nursing at the University of Memphis. She has practiced in Adult-Health focused nursing for over 30 years and has taught 17 years in both undergraduate and graduate nursing programs. Dr. Finch earned a Diploma in nursing from Baptist Hospital School of Nursing in Memphis, Tennessee, a Bachelor of Science in Nursing degree from Memphis State University, a Master of Nursing Science degree from the University of Arkansas for Medical Sciences, and a Ph. D in Communication Arts from the University of Memphis. Dr. Finch is a nationally certified Adult Nurse Practitioner and maintains a current part-time practice. Her primary program of research focuses on nurse-patient interpersonal communication and perceptions and outcomes of caring between nurses and their patients. Dr. Finch developed a substantive theory of nurse caring with elders experiencing chronic illnesses and in 2004 she was named a *Dorothy Cornelius Scholar* by the American Nurses' Foundation. She is a member of Sigma Theta Tau International, Beta Theta at-large Chapter, the American Nurses' Association, and the American Academy of Nurse Practitioners. Dr. Finch is a member of the Editorial Board of the *Tennessee Nurse* and is a reviewer for the *Journal of Nursing Scholarship*. Dr. Finch was selected as a Fellow in the American Association of Colleges of Nursing (AACN) Leadership for Academic Nursing Program in 2009.

---

**Mary E. Hanson-Zalot, MSN, RN, AOCN**

*Assistant Dean  
Jefferson School of Nursing  
Thomas Jefferson University  
130 South 9<sup>th</sup> Street  
Suite 1123, Edison Building  
Philadelphia, PA 19107  
Mary.hanson-zalot@jefferson.edu  
215.955.4942*





Mary Hanson-Zalot is the Assistant Dean for the ASN-BSN program at Thomas Jefferson University. She graduated from Holy Family University with a Bachelor's Degree, and earned a Master's Degree from Gwynedd-Mercy College with a clinical specialty in oncology and a functional role in nursing education. She is currently enrolled in an EdD program at Widener University in the higher education - administrative leadership program of study. Research interests of Ms. Hanson-Zalot include enhancement of the adjunct faculty role in nursing education, and innovative teaching strategies. She has delivered presentations nationally on the topics of academic-service partnerships, and clinical faculty role development. In March 2008, Ms. Zalot was selected as a finalist in the Nursing Spectrum's 2008 Nursing Excellence Award for teaching and was inducted into Omicron Delta Kappa, the National Leadership Honor Society at Widener University. She maintains membership in The Association of American Colleges and Universities, Sigma Theta Tau International, The American Association of Critical Care Nurses, and the Oncology Nursing Society.

---

**Nancy Haugen, PhD, RN**

*Associate Professor & Program Chair  
School of Nursing  
Samuel Merritt University  
3100 Summit Street, 3rd Floor  
Oakland, CA 94609  
510.869.6511, ext. 4702*



Dr. Haugen is Chair of the Accelerated BSN program at Samuel Merritt University in Oakland, California. Dr. Haugen received her ASN and BSN from Southern Adventist University, her MN from Louisiana State University and her PhD from the University of Florida. Dr. Haugen has more than 25 years of experience in nursing and nursing education. Her teaching experience includes adult health, health assessment, pathophysiology, pharmacology. She was instrumental in launching an on line RN to BSN program in 2004. Dr. Haugen has held faculty and leadership positions in hospitals and academic institutions. Dr. Haugen is currently authoring a nursing care plan book due for publication in March of 2010. She has done numerous local and national presentations and has developed numerous computer assisted instruction programs. Her research interest includes the physiological response to hostility and anger and nursing education. She has presented her research at several venues. Dr. Haugen has been involved in nursing education accreditation, and worked with several groups on improving nursing education.



**Jillian Inouye, PhD, APRN**

*Professor and Associate Dean for Research  
School of Nursing & Dental Hygiene  
The University of Hawai`i at Manoa  
2528 McCarthy Mall, Webster Hall  
Honolulu, HI 96822  
jinouye@hawaii.edu  
808.956.5326*



Dr. Inouye is Professor and Associate Dean for Research at the School of Nursing and Dental Hygiene at the University of Hawaii at Manoa. She earned her bachelor's degree in nursing at the University of Hawaii, her master's degree in psychiatric nursing at the University of California, Los Angeles and her master's and doctorate degree in developmental psychology at the University of Hawaii. Dr. Inouye's research program is in behavioral interventions for and quality of life of people with chronic illnesses. Her RO1 is a clinical trial to enhance self management strategies to lifestyle changes for individuals with type 2 diabetes. She is also the PI of a P20 Center for Ohana and Self-Management of Chronic Illnesses from the NINR and the PI of an Extramural Associates Research Development Award from the NICHD. Dr. Inouye also consults and publishes in the area of Asian/Pacific Islander health issues. She is the founding member and President of the Asian Pacific Islander Nurses Association.

---

**Edith Jenkins-Weinrub, EdD, RN**

*Assistant Professor  
Department of Nursing  
Holy Name University  
3500 Mountain Blvd  
Oakland, CA 94619  
Jenkins-weinrub@hnu.edu  
510.436.1551*



Dr. Jenkins-Weinrub is an Assistant Professor in the Department of Nursing at Holy Names University (HNU). She has practiced nursing administration and clinical nursing for 30 years. During the last 10 years, Dr. Jenkins-Weinrub has taught in both the graduate and undergraduate nursing programs at HNU. Dr. Jenkins-Weinrub earned her Bachelor's degree in nursing from Texas University in Arlington, her Master's degree in nursing from California State University in Dominguez Hills, and her EdD from Nova Southeastern University, in Ft. Lauderdale, Florida. Her primary research focus is on nursing leadership and education, with an emphasis on engaging nurse leaders to become active in improving healthcare delivery. She is a member of Sigma Theta Tau

International, National League for Nursing, and National Black Nurses Association. She received the *Excellence in Education* award in 2009 from Nu Xi at Large Chapter and the *Distinguish Guest Speaker Award for Nurse Week* in 2008 and the National Performance Review Hammer Award in 1997 for her contribution in setting up Willow Health Clinic, Palo Alto, CA. Dr. Jenkins-Weinrub's favorite pastimes include home improvement projects, gardening, and playing Scrabble.

---

**Barbara L. Joyce, PhD, RN, CNS**

*Associate Professor*

*Beth-El College of Nursing and Health Sciences*

*University of Colorado at Colorado Springs*

*1420 Austin Bluffs Parkway*

*Colorado Springs, CO 80918*

*bjoyce@uccs.edu*

*719.255.4430*



Dr. Joyce is an Associate Professor at the Beth-El College of Nursing and Health Sciences at the University of Colorado at Colorado Springs. She has served in various academic leadership roles including Department Chair of Undergraduate Nursing, Graduate Nursing, Health Sciences and Associate Dean. She is currently serving as Coordinator for Service-Learning and Scholarships. She is Director of Health Care Services for Comcor, Inc., a community correctional facility and Director of Health Services for Sky High Ranch, Wagon Wheel Council, Girl Scouts of America. Dr. Joyce earned her BSN from Indiana University (1973), the MSN from Texas Woman's University (1979) and her Ph.D. from the University of Mississippi in Organization and Administration of Higher Education (1987). She holds appointments in the undergraduate and graduate nursing programs. As a clinical nurse specialist in community/public health her practice is focused on women's health issues in vulnerable target populations. Her areas of research include birth outcomes of at-risk pregnant women, health integration of incarcerated women, breast health outcomes and collegiate tobacco awareness. Professional interests include violence across the lifespan, faith and public health, correctional health care and international women's health issues.

---

**Jane Kapustin, PhD, CRNP, BC-ADM, FAANP**

*Assistant Dean for the Master's Program*

*Associate Professor*

*School of Nursing*

*University Of Maryland*

*655 West Lombard Street, Suite 516*

*Baltimore, MD 21201*

*410.706.389*



Dr. Kapustin has been on faculty at the University of Maryland, Baltimore since 2000 where she was the program director for the Adult Nurse Practitioner program. In 2007, she also assumed the role of assistant dean for master's studies. She maintains a faculty practice (20% effort) at the Joslin Diabetes Center in Baltimore, MD where she manages complex diabetic patients. She mentors doctoral and masters students for advanced practice clinical at the diabetes center, and she serves on numerous doctoral dissertation and/or capstone committees for students with interests in diabetes, genetics, and healthcare policy. Dr. Kapustin completed her dissertation study in the field of gestational diabetes with a particular focus on clinical practice guidelines and policy implications for this population. She publishes in the field of diabetes and is a requested presenter for regional and national conferences. She lectured most recently on the topic of the Doctor of Nursing Practice (DNP) and Faculty Mentoring at the National Organization of Nurse Practitioner Faculty (NONPF) conference in April 2007 and 2008 and for a national conference on the Consensus Model at the AACN Master's Conference in February 2009. She assisted with the development of the DNP program at University of Maryland, Baltimore and she teaches several core courses including Methods for Evidence Based Practice, Capstone Development, and Capstone Implementation. Dr. Kapustin is the past president of the Nurse Practitioner Association of Maryland (NPAM) and has been on the board of directors for NPAM for over 8 years. She coordinates several community services and health screening events in Baltimore, and she served on the leadership council for the American Diabetes Association in Baltimore. Dr Kapustin is a reviewer for eight peer-reviewed journals and serves on the editorial board for *Journal for Nurse Practitioners*. She was awarded the "Nurse Practitioner of Year" in Maryland in 2006 and was recently selected as a Fellow of the American Academy of Nurse Practitioners.

---

**Karen A. Karlowicz, EdD, MSN, RN**  
*Associate Professor and Chairperson*  
*School of Nursing*  
*Old Dominion University*  
*4608 Hampton Boulevard*  
*Norfolk, VA 23529*  
*kkarlowi@odu.edu*  
*757.683.4297*



Dr. Karlowicz is Associate Professor and Chairperson of the School of Nursing at Old Dominion University (ODU) in Norfolk, VA. Prior to this position she served as coordinator for the MSN Nurse Educator Role Option, as well as Undergraduate Program Director for the School of Nursing. In 2006, Dr. Karlowicz accepted the John A. Hartford Foundation Institute for Geriatric Nursing/American Association of Colleges of Nursing Award for Baccalaureate Education in Geriatric Nursing – Infusion of Geriatrics into the Baccalaureate Curriculum on behalf of the faculty at ODU. She is also the

recipient of the ODU College of Health Sciences Teaching Excellence Award and Excellence in Technology-Based Teaching awards in 2008. Dr. Karlowicz is a Past President of the Society of Urologic Nurses and Associates (SUNA), and currently is a member of the editorial board for *Urologic Nursing*. She is also the co-chair of the Education Research Interest Group (RIG) for the Southern Nursing Research Society (SNRS). Research interests center on nursing education and clinical practice and have included studies on the development and testing of a portfolio evaluation scoring tool, correlation of portfolio scores to other measures of academic performance and clinical competence, as well as the impact of incontinence experiential learning on professional nursing practice.

---

**Merle R. Kataoka-Yahiro, DrPH, APRN, RN-BC**

*Associate Professor and Graduate Chair  
University of Hawaii at Manoa  
School of Nursing and Dental Hygiene  
2528 McCarthy Mall, Webster Hall 409  
Honolulu, HI 96822  
merle@hawaii.edu  
808. 956.5329*



Dr. Kataoka-Yahiro is an Associate Professor and Graduate Chair at the University of Hawaii at Manoa School of Nursing and Dental Hygiene in Honolulu, HI. She earned a BSN from the University of Hawaii at Manoa, her MS in Parent-Child Nursing from Rush University, College of Nursing, MPH from Northwestern University, and DrPH from University of Illinois at Chicago. She has 25 years of experience in nursing education and practice, specializing in parent-child nursing. She has contributed to all levels of the department's instructional program: BS, MS, and PhD. She has facilitated the establishment of the accelerated Master's Entry Program in Nursing and two MS specialty area programs. She also facilitated the development of the AACN *Master's Essentials* graduate nursing core content related courses and prepared the Graduate Program for accreditation. Dr. Kataoka-Yahiro's area of research is in family care giving, decision-making, and end-of- life care. She has served on the Editorial Board of the *Journal of Nursing Education*. She is a member of the Society of Pediatric Nurses, Western Institute of Nursing, Sigma Theta Tau International, and the Asian American Pacific Islander Nurses Association.

**Kathy J. Keister, PhD, RN, CNE**

*Assistant Professor  
Director, BEACON  
College of Nursing & Health  
Wright State University  
3640 Colonel Glenn Hwy.  
Dayton, OH 45435  
kathy.keister@wright.edu  
937.775.2604*



Dr. Keister is an Assistant Professor and Director of the BEACON accelerated nursing program in the College of Nursing & Health at Wright State University. She holds bachelor degrees in nursing and biology from Bowling Green State University, a master's of science from the University of Illinois, and a doctorate in nursing from Case Western Reserve University. In addition, Dr. Keister earned a Graduate Certificate in Gerontology from the University Center on Aging and Health at Case Western Reserve University. She holds certification as a Nurse Educator, and has over 15 years in teaching experience at the undergraduate and graduate levels. She is interested in determinants of academic success of nursing students, interactive teaching strategies, and the development of scholarship of students. She has expertise in curriculum revision. She has received numerous awards for her teaching from both nursing colleagues and students. She has been successful in securing funding from internal and external sources for various other projects. She is a member of Sigma Theta Tau, the American Nurses Association, the National League for Nursing, and the Ohio League for Nursing.

---

**Patricia J. Kelly, PhD, MPH, RN, FNP**

*Professor  
School of Nursing  
University of Missouri-Kansas City  
2464 Charlotte Street  
Kansas City, MO 64108  
kellypj@umkc.edu  
816.235.2617*



Dr. Kelly is Professor at the University of Missouri, School of Nursing. She has served as the Director of Research of the UMKC Center of Excellence in Women's Health. Dr. Kelly began her career as a family nurse practitioner, continues to provide care in her local health department's family planning clinic. She is committed to assisting women to control their own fertility through clinical practice, education and research. She is an advocate for reproductive health issues and the frequent intersection of these issues with violence. Dr. Kelly is a seasoned researcher and has served as Principal Investigator on two NIH-funded community-based research studies. Her current NIH-funded community-based intervention is successfully using principles of participatory action

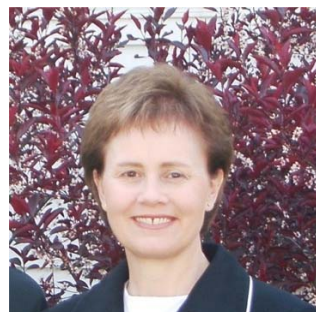


research. Her research project, Girl Talk-2, compared the outcomes from the use of peer educators in an empowerment intervention with those from the same information delivered in a traditional lecture format. Dr. Kelly has also used PhotoVoice methods with Hispanic adolescent girls and developed a community-based Promotora program to increase community awareness about violence against women.

---

**Kathy M. Ketchum, PhD, RN**

*Associate Professor  
School of Nursing  
Southern Illinois University Edwardsville  
Box 1066  
Edwardsville, IL 62026  
kketchu@siue.edu  
618.650.5482*



Dr. Ketchum has been on faculty at Southern Illinois University Edwardsville (SIUE) School of Nursing since 1991. She completed a BSN at University of Illinois Medical Center in Chicago, IL; an MS in Nursing from SIUE; and a PhD in Nursing from Saint Louis University in St. Louis, MO. Her professional work experiences include staff nursing at hospitals in both Missouri and Illinois in critical care and trauma, as well as serving as a faculty member at associate degree, diploma, and baccalaureate nursing school programs. Research interests have included care of trauma patients and their families, innovative medication administration technologies, and emerging technologies in education. Areas of teaching expertise include general medical-surgical nursing, telemetry/critical care, and both graduate and undergraduate nursing research. She has had a collaborative practice with a local community hospital for the last several years as their Research Scientist. Recent leadership activities include serving as the university-wide Undergraduate Curriculum Chair, Chair of the School of Nursing Faculty Council, and Project Manager for the new Doctor of Nursing Practice program. Professional organization memberships include Sigma Theta Tau, Midwest Nursing Research Society, American Nurses Association, and American Association of Critical Care Nurses.

---

**Jane Kirkpatrick, PhD, RN**

*Associate Dean, College of Pharmacy, Nursing, and Health  
Sciences  
Head, School of Nursing  
Purdue University  
502 N. University Street  
West Lafayette, IN 47907  
jmkirk@purdue.edu  
765.494.4004*



An award-winning nurse educator, Dr. Kirkpatrick is author of numerous computer-based education programs. She received the Pinnacle Award (2004) and the International Tribute Award for Computer-based Education Technology (2005) from Sigma Theta Tau International for her collaboration on a professional education program teaching nursing care in Labor and Delivery. Computer-based instructional programs developed by Dr. Kirkpatrick on newborn assessment are currently used in nursing schools and hospitals across the country. She is certified in Inpatient Obstetrics by NCC and her practice expertise includes all areas of inpatient obstetrics and neonatal intensive care. Dr. Kirkpatrick's research focuses on the use of technology in nursing education and practice. In recognition of outstanding scholarly contributions, she has received awards from the Midwest Nursing Research Society (2008) and Ed-Media's World Conference on Educational Multimedia, Hypermedia, and Telecommunications (2009). She served as co-chair of the Executive Council of the Purdue University Teaching Academy and her name is inscribed in the Purdue University Book of Great Teachers. Dr. Kirkpatrick earned her undergraduate degrees in nursing from Purdue University, her master's degree from Indiana University, and her doctorate in educational technology from Purdue. She is currently serving as the Head of the Purdue University School of Nursing and Associate Dean in the College of Pharmacy, Nursing, and Health Sciences.

---

**Mary L. Koehn, PhD, ARNP, FACCE**

*Acting Chair, School of Nursing  
Associate Dean, College of Health Professions  
School of Nursing  
Wichita State University  
1845 Fairmount, Box 41  
Wichita, KS 67260  
Mary.Koehn@wichita.edu  
316.978.5700*



Dr. Koehn is an Associate Professor in the School of Nursing at Wichita State University, Wichita Kansas. She currently serves as the Acting Chair of the School of Nursing and the Associate Dean of the College of Health Professions. She has been engaged in teaching for the last 18 years in both the graduate and undergraduate nursing programs at the University. Dr. Koehn holds a BSN from Wichita State University, an MSN from Wichita State University, and a PhD in Nursing from the University of Kansas. Her primary programs of research focus on childbirth education and nursing education. She has continuously engaged in scholarly activities including national/international presentations and publications. Her areas of teaching expertise include nursing theory, evidence-based practice, and nursing education. Dr. Koehn has served in numerous leadership roles within the University, College, and School as well as leadership roles in state and local units of national organizations. She is a member of the Association of Women's Health, Obstetric, and Neonatal Nurses; Lamaze International; Sigma Theta Tau International Honor Society (Epsilon Gamma Chapter); and the American Nurses



Association. In 2008, Dr. Koehn was selected as a Fellow in the College of Health Professions Leadership Academy.

---

**Joan E. Kub, PhD, MA, PHCNS, BC**

*Associate Professor  
School of Nursing  
Johns Hopkins University  
525 N. Wolfe  
Baltimore, MD 21205  
jkub@son.jhmi.edu  
410.955.7763*



Dr. Kub is an Associate Professor at the Johns Hopkins School of Nursing, holding joint appointments with JHU Bloomberg School of Public Health and School of Medicine. She coordinates the MSN/MPH program, a joint program of the School of Nursing and the School of Public Health. She is certified as an advanced public health nurse and has worked in public health for over 30 years. She is currently active with the Mid-Atlantic Public Health Training Center providing training to public health professionals in the region. She earned her Bachelor's degree from South Dakota State University, her Master's from the University of Maryland and her PhD from the Bloomberg School of Public Health in Behavioral Sciences. She also earned a Masters of Theology from St. Mary's Seminary and University. Her primary program of research focuses on vulnerable populations in urban settings, specifically populations experiencing violence, substance abuse and asthma. In addition, she serves on the Ethics Service for the Johns Hopkins Hospital and has been a co-investigator on studies focused on end of life, ethics, and spirituality. She serves on the Editorial Board for the Journal of Addictions Nursing and is on the Board for the American Community Health Nursing Educators (ACHNE). She received the Johns Hopkins University Alumni Council Excellence in Teaching Award in 2005, and in 2006 the Maryland Nurses Association Mentor of the Year Award.

---

**Patricia A. Lange-Otsuka, EdD, MSN, APRN, PHCNS-BC, CNE**

*Professor and Associate Dean for Administrative and Fiscal Affairs  
Interim Program Chair: Baccalaureate Nursing Program  
College of Nursing and Health Sciences  
Hawaii Pacific University  
45-045 Kamehameha Highway  
Kaneohe, Hawaii 96744  
potsuka@hpu.edu  
808.236.5812*



Dr. Lange-Otsuka has served in a progressive series of leadership and administrative positions: undergraduate chair, nursing faculty chair, graduate chair, university faculty chair, Associate Dean and Interim Dean. She has held the Associate Dean position for the past 6 years (enrollment: 1600, faculty: 100+ full time and adjunct positions). She is known as a problem-solver and critical thinker that finds innovative solutions.

Dr. Lange-Otsuka's clinical expertise is in the public health/ community health domain. She also has over 10 years experience in the medical-surgical and critical care areas of practice. Her teaching areas of expertise are: pharmacology and epidemiology at the both the undergraduate and graduate levels. Her research interests include academic predictors of NCLEX success, adjunct faculty satisfaction, chronic health conditions, and health disparities. She is currently serving on the Hawaii State Board of Nursing for her second term as Education Chair. She has been a delegate to the NCSBN annual meeting for the last three years. Other service includes two taskforces (nursing shortage and workforce) with the Hawaii State Center for Nursing. She serves as a NLNAC Site Visitor. She has been an active participant in several Robert Wood Johnson initiatives including the "Partners in Caring" focusing on workforce issues, increasing nursing career development in Hawaii long term care and as a member for the Hawaii team for building Nursing Education Capacity.

---

**Susan G. Larson, PhD, RN**

*Interim Dean, School of Nursing & Health Science*

*Department Chair, Nursing*

*MidAmerica Nazarene University*

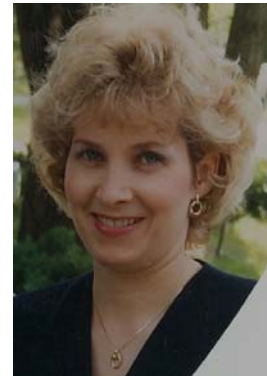
*MNU*

*2030 E. College Way*

*Olathe, KS 66062*

*slarson@mnu.edu*

*913.971.3698*



Dr. Larson is a Professor of Nursing and is currently serving as the Interim Dean for the School of Nursing and Health Science at MidAmerica Nazarene University. She has been the Department Chair of Nursing for the past three years, and has been an MNU faculty member since 1989. Her clinical area of expertise is emergency and critical care nursing. In 1999 she received a distinguished service award from the Emergency Nurses Association for her contribution as an item writer for the certified emergency nursing (CEN) examination. She obtained both her MSN (1989) and PhD (2002) degrees from the University of Kansas, School of Nursing. Dr. Larson's doctoral dissertation explored phenomenological methodology as an approach to enhanced understanding of the contemplative spiritual experience and its relationship to healing and nursing. For this research experience, she was awarded the Melba Carter award for the most outstanding dissertation in the field of health promotion or disease prevention. Dr. Larson has served in several leadership positions within the Nursing Department, and has been granted the 'mentor of the year' award three times by the MNU senior nursing class. In 2008, Dr.

Larson was recognized by her peers with the University's distinguished Faculty Member of the Year award. Her passions include creative teaching strategies, overall development of novice nursing faculty, and innovative nursing programs. In addition to her enthusiasm for nursing education, her favorite pastimes include being with family and gardening.

---

**Eve L. Layman, PhD, RN, NEA-BC**

*Graduate Nursing Department Chair & Associate Professor  
College of Nursing and Health Sciences  
Texas A&M University-Corpus Christi  
Unit 5805 Center for Instruction 372  
6300 Ocean Drive  
Corpus Christi, TX 78412  
Eve.Layman@tamucc.edu  
361.825.3781*



Dr. Layman has had a diverse career in nursing including practice in the U.S. Army, community mental health as a Psychiatric-Mental Health Clinical Nurse Specialist, and currently as a nurse educator. She is currently employed as the Graduate Nursing Department Chair in the Texas A&M University-Corpus Christi College of Nursing and Health Sciences. She works with a team of expert clinicians and educators to expand the role of nursing in South Texas. Her activities extend beyond her work in the college. She currently serves as the TAMUCC Institutional Review Board chair and represents the College of Nursing and Health Sciences on university and community committees. She has worked with the local community behavioral health center for several years and currently serves as chair for their foundation. She is the president for the Texas Nurses Association District. Dr. Layman received her BSN from the University of Maryland, MSN from the University of Washington, and her PhD from the University of North Carolina at Chapel Hill. She is an active member of Sigma Theta Tau International, Eta Omicron Chapter, Council of Graduate Administrative Nursing Education, AcademyHealth, and the American Organization of Nurse Executives.

---

**Cynthia Logsdon, DNS, ARNP, FAAN**

*Professor  
School of Nursing  
University of Louisville  
555 S. Floyd St.  
Louisville, KY 40202  
mclogs01@gwise.louisville.edu  
502.852.5825*



No information provided.

**Nelda C. Martinez, PhD, RN**

*Associate Professor and Director,  
Center for Nursing Research and Evaluation  
Senior Fellow, Hispanic Health Disparities Research Center  
School of Nursing  
The University of Texas at El Paso  
1101 N. Campbell St.  
El Paso, TX 79902  
ncmartinez@utep.edu  
915.747.7251*



Dr. Martinez is Associate Professor and Director of the Center for Nursing Research and Evaluation at The University of Texas at El Paso School of Nursing. She is also Senior Fellow in the Hispanic Health Disparities Research Center. She received both her Bachelor and Master of Science degrees in Nursing from Wright State University and her Ph.D. in Nursing from The Ohio State University. She completed a Postdoctoral Fellowship in Clinical Genetics at The University of Iowa College of Nursing along with the Graduate Training Program in Clinical Investigation in the College of Medicine. Her research focuses in the area of diabetes and Mexican Americans, particularly the role of language/literacy and Spanish language translation of instruments to determine the efficacy of health education and behavioral change programs for Hispanics. She has published and presented across a range of settings related to her research topics and received national recognition through the Distinguished Service Award presented by the American Association of Diabetes Educators. In addition to research, her role in academia includes assessment and evaluation of both undergraduate and graduate nursing degree track programs for both university and nursing school accreditation purposes. She is an active member of several professional organizations that includes Sigma Theta Tau International, National Association of Hispanic Nurses, American Association of Diabetes Educators, National Coalition of Ethnic Minority Nurses Association, and the Southern Nursing Research Society.

---

**Chad E. O'Lynn, PhD, RN, RA**

*Assistant Professor  
School of Nursing  
University of Portland  
5000 N. Willamette Blvd. MSC-153  
Portland, OR 97203  
olynn@up.edu  
503.943.7357*



Dr. O'Lynn is an assistant professor at the School of Nursing at University of Portland in Portland, OR. He has been a neuroscience and geriatric nurse for 23 years, working in both inpatient and community-based settings as a clinical nurse specialist and adult nurse practitioner. He has worked as full-time faculty since 2000 in both undergraduate and graduate nursing programs. Dr. O'Lynn earned his BS in Speech Communications from Portland State University in 1984, his AS in nursing from Clackamas Community College in 1986, and his master's and doctorate from Oregon Health & Science University in 1992 and 2006 respectively. He also holds a doctorate in Health Administration from Kennedy-Western University and is a registered aromatherapist. His research focuses on men in nursing and male nursing students. He co-edited *Men in Nursing: History, Challenges, and Opportunities* (2007, Springer) and is currently writing *A Man's Guide to Nursing Career*. He has presented nationally and internationally on men's issues. He currently serves on the editorial board for *Journal of Nursing Education*. Dr. O'Lynn is the current director of the direct-entry Master's program for second degree students at the School of Nursing.

---

**Cynthia A. Padula, PhD, RN**

*Professor of Nursing and Director of the Master of Science in  
Nursing Program  
Rhode Island College  
600 Mount Pleasant Avenue  
Providence, RI 02908  
cpadula@ric.edu  
401.793.3617*



Dr. Padula has more than 35 years of experience in nursing. She originally completed an Associate Degree in Nursing from Rhode Island Junior College, and then earned a Baccalaureate Degree in Nursing from Salve Regina College in Newport, Rhode Island. She subsequently earned a Master's Degree from Boston University with a specialty in Cardiovascular Nursing, and a PhD from the University of Connecticut, School of Family Studies, with an emphasis in Gerontology. Dr. Padula's nursing experience includes expertise in medical surgical nursing, cardiovascular nursing, gerontology, and family relationships. She has extensive teaching experience in undergraduate, Master's, and Doctoral programs in Nursing, and has also functioned for more than 10 years as a core faculty member in the Rhode Island Geriatric Education Center. Dr. Padula serves as a per diem nurse researcher at The Miriam Hospital, a long standing Magnet acute care facility in Providence Rhode Island. Her research interests include inspiratory muscle training in people with heart failure, as well as pressure ulcer and falls prevention in acutely ill adults. Dr. Padula serves as a reviewer for several journals including *Applied Nursing Research*. Since 2007, Dr. Padula is Director of the new Master's program in Nursing at Rhode Island College.



**Suzanne Perraud, PhD, PMHCNS-BC**

*Associate Dean/Director of Specialist Education and DNP  
College of Nursing  
Rush University  
600 S. Paulina  
Chicago, IL 60612  
Suzanne\_Perraud@rush.edu  
312.942.6860*

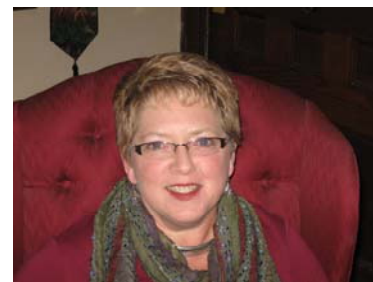


Dr. Perraud received her baccalaureate and PhD degrees from University of Illinois at Chicago, and her masters degree in psychiatric nursing from Rush University in Chicago. She has a strong background in clinical leadership, beginning with her role as assistant head nurse in psychiatry in a year after starting her first job in nursing, and extending to her subsequent roles in acute care as Quality Coordinator, Clinical Specialist, and Unit Director. She is certified as a psychiatric adult clinical nurse specialist and has done research developing a depression self-management self-efficacy scale, which has been cited frequently and translated into a number of languages. Dr. Perraud joined the Rush faculty full time in 1996, presenting extensively and publishing on her research and other interests. She was appointed as Associate Professor in 2004. Dr. Perraud has held several academic leadership positions at Rush, including as Associate Chair in Community and Mental Health Nursing for six years. In 2006 she was appointed as the Program Director for the masters specialty and DNP programs. Since 2008 she has served as Associate Dean for Academic Affairs. She was appointed as a fellow in the Institute of Medicine, Chicago, in 2008.

---

**Kathleen L. Peterson-Sweeney, PhD, RN, PNP-BC**

*Professor, Chair  
Department of Nursing  
The College at Brockport, State University of New York  
350 New Campus Drive  
Brockport, NY 14420  
kpeterso@brockport.edu  
585.395.5319*



Dr. Peterson-Sweeney is a professor and chair of the Department of Nursing at The College at Brockport, State University of New York. She earned her bachelor's degree in nursing from Albany University and earned both her Master's degree in nursing and PhD in Health Practice Research from the University of Rochester. Dr. Peterson-Sweeney has taught at The College at Brockport for 25 years and earned the distinguished Chancellor's

Award for Excellence in Teaching through the State University of New York in 1998. Her area of expertise in teaching is infant, child and adolescent health care at both the undergraduate and graduate levels. She has also taught foundational courses as well as research to undergraduate students. Dr. Peterson-Sweeney is a board certified Pediatric Nurse Practitioner, and has maintained an active primary care practice in both rural and urban practices over the last 30 years. Her research areas include asthma in children and the effect of household routines on asthma outcomes. Dr. Peterson-Sweeney has authored and co-authored several journal articles and is active in contributing to the scholarship of advanced nursing practice. She is currently an accreditation reviewer for the Commission on Collegiate Nursing. She serves as a reviewer for many text books and has been an exam writer for the American Nurses Credentialing Center, Regents College, and the National League for Nursing.

---

**Joyce Pulcini, PhD, RN, PNP-BC, FAAN, FAANP**

*Department Chair*

*William F. Connell School of Nursing*

*Boston College*

*140 Commonwealth Ave. Cushing 307*

*Chestnut Hill, MA 02467*

*pulcinjo@bc.edu*

*617.552.3232*



Dr. Pulcini is currently an Associate Professor, Department Chair and Coordinator of the Pediatric Nurse Practitioner Program at the Boston College Connell School of Nursing. With a career of over 30 years as a pediatric nurse practitioner (PNP), educator and author, Dr. Pulcini directed three nurse practitioner programs and has consistently been a leader in health care and nursing policy. She is a Fellow of the American Academy of Nursing, a Fellow of the American Academy of Nurse Practitioners and a Distinguished Practitioner in Nursing, National Academies of Practice. She has held leadership positions in organizations such as the International Nurse Practitioner/Advanced Practice Nursing Network, the National Organization of Nurse Practitioner Faculties (NONPF), the Massachusetts Nurses Association, and Nurse Practitioner Associates for Continuing Education. Dr. Pulcini has contributed more than 200 articles, textbooks and presentations about topics ranging from postpartum depression to improvements in nurse practitioner education and health policy. She is a senior associate editor for *Policy, Politics and Nursing Practice*, and is a reviewer for several leading nursing journals. Dr. Pulcini received her BSN from St. Anselm College, her MS in Nursing from Boston University and her PhD in Social Policy from Brandeis University's Florence Heller School.



**Kathleen M. Rayman, PhD, RN**

*Associate Professor and Director of Graduate Programs  
College of Nursing  
East Tennessee State University  
P.O. Box 70629  
Johnson City, TN 37614  
raymank@etsu.edu  
423.439.4589*



Dr. Rayman is an Associate Professor and Director of Graduate Programs at East Tennessee State University. She received a Bachelor of Science in Nursing from the University of Pittsburgh, a Master of Science in Nursing from the University of Virginia, and PhD in Nursing Science from the University of Virginia. Dr. Rayman has extensive experience in nursing education, and has taught at the associate, baccalaureate, masters and PhD levels of nursing education. Her teaching responsibilities have included courses in health policy, interdisciplinary bioethics, the patient's illness experience, qualitative research and advanced data analysis. Dr. Rayman's program of scientific inquiry is in the area of self-care among women with type 2 diabetes, specifically in seeking to understand women's experiences in learning to manage self-care, and the role of patient-provider relationships in women's self-care and illness experience of diabetes. She has presented and published her work nationally and internationally. Currently, as Director of Graduate Programs, Dr. Rayman directs the Nurse Practitioner, Nursing Administration, Clinical Nurse Leader, Regents Online MSN Degree, and PhD in Nursing programs. She has served as a consultant in qualitative research methods.

---

**Carol Reineck, PhD, RN, FAAN, NEA-BC**

*Chair & Associate Professor  
Department of Acute Nursing Care  
Amy Shelton and V.H. McNutt Professor  
In honor of nurses of the Armed Forces  
University of Texas Health Science Center - MC 7975  
7703 Floyd Curl Drive  
San Antonio, TX 78229  
reineck@uthscsa.edu  
210.567.5883*



Dr. Reineck is Associate Professor and Chair, Department of Acute Nursing Care and the Amy Shelton and V.H. McNutt Professor in honor of nurses of the Armed Forces, The University of Texas Health Science Center, San Antonio (UTHSCSA). Rising from Clinical Nurse to Chief Nurse Executive, she transitioned from 31 years of armed forces

service in 2001. Her final military position was Chief Nurse Executive of the world-wide U.S. Army Medical Command. Dr. Reineck is Treasurer, American Organization of Nurse Executives. She has authored text chapters on multiple trauma and academic leadership and published 23 peer-reviewed articles. She was principal investigator on a clinical study that helped resolve the heparin-saline debate and directed two congressionally funded studies on readiness to perform nursing care in austere environments. She is a Fellow, American Academy of Nursing, board certified in Advanced Nursing Administration and is a Critical Care RN (CCRN) Alumnus. Dr. Reineck is known as an advocate for linking nursing education with practice. Her efforts include designing nursing administration curricula to better meet the needs of contemporary practice, providing research education inside hospital settings, promoting faculty practice, and helping nurses assess their readiness for combat and disasters.

---

**Jacqueline Rhoads, PhD, ACNP-BC, ANP-C, PMHNP,  
FAANP**

*Professor and MSN Program Director*

*The Joseph B and Mary Alice Collerain Professorship in  
Nursing*

*University of Texas Medical Branch*

*301 University Blvd*

*Galveston, TX 77554*

*jarhoads@utmb.edu*

*504.495.6194*



Dr. Rhoads is Professor and Graduate Program Director at the University of Texas Medical Branch in Galveston Texas. She maintains clinical competence through direct patient care in acute- and primary-care settings. Her experience includes a various leadership positions during her 30 tenure with the US Army both active and reserve duty, as well as major positions in schools of nursing and colleges of nursing in both private and public sectors. Dr. Rhoads received a Bachelor of Science in Nursing from Incarnate Word in San Antonio, Texas, and a Master of Science in Nursing from Texas Woman's University, Dallas. She earned a PhD from the University of Texas at Austin. Her post-Masters work includes the Acute Care Nurse Practitioner Program at the University of South Carolina, Columbia; the Primary Care Nurse Practitioner Program at Southeastern University, Hammond, Louisiana; the Geriatrics Program at the University of Texas Health Sciences Center in Houston and most recently Post Masters in Psych/Mental Health from Southeastern Louisiana State University in Hammond. She has held the prestigious critical care nurse certification (CCRN) for over 20 years. She holds two national certifications as an acute care NP and an adult NP. In June 2007 she was inducted as a Fellow in the American Academy of Nurse Practitioners. Dr. Rhoads has more than 22 published articles in juried nursing journals and nationally recognized publications in topics ranging from primary care to emergency nursing. She has served as a principal investigator in 12 studies.

**Catherine Rosser, EdD, CNA-BC, RN**

*Director, Undergraduate Program Director  
School of Nursing  
Baylor University Louise Herrington  
3700 Worth Street  
Dallas, Texas 76246  
Catherine\_rosser@baylor.edu  
214.820.2776*



Dr. Rosser is the Director of the Undergraduate Program at Baylor University Louise Herrington School of Nursing in Dallas, Texas. She earned her Doctorate in Higher Education at Texas A&M University - Commerce, and has more than thirty years of professional experience in nursing administration, nursing practice, and nursing education. As the Director of the undergraduate program at Baylor University she is responsible for faculty workload and program evaluation. Additionally, she maintains her clinical practice as a hospital administrative supervisor in a major metropolitan hospital. Dr. Rosser is a member of Sigma Theta Tau, International and the American Nurses Association. She was honored by the Dallas Chapter as “Nurse of the Year.” She has presented locally and nationally, has authored two book chapters and served as a book contributor.

---

**Lepaine Sharp-McHenry, MS, RN, FACDONA**

*Assistant Director  
Eleanor Mann School of Nursing  
University of Arkansas  
Fayetteville, AR 72701  
lmchenry@uark.edu  
479.575.5627*



Lepaine Sharp-McHenry has worked in various clinical and management positions in Long Term Care, Medical/Surgical, and Psychiatric Mental Health Settings. She completed an Associate of Science in Nursing at Southern Arkansas University, a Bachelor of Science in Nursing at the University of Arkansas and a Master of Science with a Major in Nursing from the University of Oklahoma as a Clinical Nurse Specialist in Psychiatric Mental Health Nursing. She holds a certification as a Long Term Care Nurse Administrator. As a nursing faculty for 13 years, she has taught traditional and on-line courses in undergraduate and graduate programs. She has also conducted research

and published in the long-term care field. She has worked in the legal field as a Legal Nurse Consultant for over 10 years serving as an expert witness in abuse, neglect, and malpractice cases. Ms. McHenry was recognized as one of Fayetteville's Top Five Young Professionals and Outstanding Young Arkansan. She has served on numerous non-profit boards nationally and locally. She has served four appointments by the Governor of Arkansas (Long Term Care Advisory Board, Minority Health Commission, and Arkansas State Board of Nursing (VP and President) and is currently serving on the Governor Roundtable on Healthcare. McHenry also chaired the Transition to Practice Committee for the National Council of State Boards of Nursing and is a past Vice President of this organization.

---

**Joann E. Smith, PhD, RN**

*Assistant Professor  
College of Pharmacy, Nursing, Allied Health  
Division of Nursing  
Howard University  
516 Bryant Street, NW  
Washington, DC 20059  
J\_Smith03@Howard.edu  
202.806.5575*



Dr. Smith received her PhD in Nursing Science from the University of South Carolina in Columbia, SC, and the MSN in Nursing Administration from the California State University in Fresno, California. She holds post-graduate certifications in Transcultural Nursing and Women's Studies. Dr. Smith has twenty-five years of professional experience in the areas of community/public health nursing practice, education and service. She has served as Board member or consultant to several health care institutions and agencies in California, North Carolina and Washington, DC. In 2007, she was named a Jim Bernstein Leadership Fellow by the North Carolina Foundation for Advanced Health Programs. Dr. Smith is an Assistant Professor of Nursing at Howard University Division of Nursing, with a secondary appointment as an Assistant Professor in the College of Medicine- Community and Family Medicine. Her current teaching responsibilities include Community Health, Nursing Leadership and Health Care Ethics. Her research interests include stress and coping in adolescents during pregnancy and health disparities of vulnerable populations. Dr. Smith continues to maintain leadership positions in national professional nursing and interdisciplinary health care organizations.

---

**Judith Spross, PhD, FAAN**

*Dean and Professor  
College of Nursing  
University of Southern Maine  
P.O. Box 9300  
Portland, ME 4064  
jspross@usm.maine.edu*



207.780.4144

Dr. Spross is Acting Dean and Professor of Nursing in the College of Nursing and Health Professions (CONHP) at the University of Southern Maine and has taught in the Adult Health Clinical Nurse Specialist Program as well as NUR 604, Nursing Research, a required graduate course. She served as chair of the USM Research Council (2006-2009). She has also supported and coached CONHP faculty in their scholarship activities. She is a Fellow in the American Academy of Nursing. Prior to coming to the University of Southern Maine, she had extensive experience as a clinical specialist in oncology and pain management at academic and research intensive medical centers including Dartmouth Hitchcock Medical Center and the NIH Clinical Center. For seven years, she was co-investigator and project manager on federally and privately funded grants in health services research aimed at changing institutional and clinical practice at Education Development Center, Inc. in Newton, MA. She has published both clinical and research articles in the areas of oncology nursing, advanced practice nursing and pain management and is the co-editor of a widely used, award-winning graduate nursing textbook, *Advanced Practice Nursing: An Integrative Approach* (most recently, the 4<sup>th</sup> Edition). She earned her BSN from Villanova University, MS from Virginia Commonwealth University, and her PhD in nursing from Boston College.

---

**Rosemarie Suhayda, PhD, APRN**

*Associate Professor*

*College of Nursing*

*Rush University*

*600 South Paulina, suite 1080*

*Chicago, IL 60517*

*rosemarie\_suhayda@rush.edu*

*312.942.6204*



Dr. Suhayda is an Associate Professor at Rush University College of Nursing, Chicago Illinois. She received her MSN in medical-surgical nursing from the University of Illinois at Chicago, post-master's certificate as an adult nurse practitioner from Rush University, and PhD in Educational Research from Loyola University in Chicago. In addition to her teaching role at the master's and DNP levels, Dr. Suhayda holds secondary appointments as the Director of Evaluation for the College of Nursing and Director of University Assessment and Student Learning for Rush University. With an extensive background in curriculum and program assessment and evaluation, Dr. Suhayda consults nationally and internationally and serves as a consultant-evaluator for the Higher Learning Commission, a Commission of the North Central Association of Colleges and Universities. She also serves as co-investigator and project evaluator on several training grants and has published and presented on a variety of topics related to curriculum and evaluation.



**Susan Mace Weeks, DNP, RN, CNS, LMFT, LCDC**

*Associate Dean, Harris College of Nursing & Health Sciences  
Director, Center for Evidence-Based Practice & Research:  
A Collaborating Center of the Joanna Briggs Institute  
Texas Christian University  
TCU Box 298620  
Fort Worth, TX 76129  
s.weeks@tcu.edu  
817.257.7519*



Dr. Weeks serves at the Associate Dean for the Texas Christian University (TCU) Harris College of Nursing and Health Sciences, as well as the Director of the TCU Center for Evidence Based Practice and Research: A Collaborating Center of the Joanna Briggs Institute. She holds a Doctor of Nursing Practice degree, a Master of Science in Nursing degree, and a Bachelor of Science in Nursing degree. She also completed honors study at Harlaxton College in Grantham, England. Her publications have a common theme of inter-agency collaboration. Her teaching responsibilities include both undergraduate and graduate courses. In addition to her academic responsibilities, Dr. Weeks serves as an Appraiser, Team Leader, and Mentor with the American Nurses Credentialing Center's Magnet Recognition Program, and maintains a clinical practice as a Clinical Nurse Specialist in the Fort Worth area. She is actively involved in community activities, including her role as a Disaster Health Services volunteer and board member with the Chisholm Trail Chapter of the American Red Cross.

---

**Rebecca F. Wiseman, PhD, RN**

*Assistant Dean, Shady Grove Regional Campus  
University of Maryland School of Nursing  
Universities at Shady Grove  
Building I, Room 313  
9640 Gudelsky Drive  
Rockville, MD 20850  
Rwise002@son.umaryland.edu  
301.738.6041*



Dr. Wiseman earned her BSN from the University of Tennessee, Knoxville, an MSN from the University of Pennsylvania with a Major in Adult Health and a Minor in Education and a PhD from the University of Maryland School of Nursing (UMSON) with a focus in Education Policy and Administration. Dr. Wiseman's clinical background is in adult health. In 2005, in the aftermath of Hurricane Katrina, she led a team of 10 volunteers and 2 Wellmobiles (mobile units) to Mississippi to provide primary care

services. She received a Governor's Citation and the 2006 UMB Founder's Day Award for Public Service. In March of 2009, she accepted the position of Assistant Dean for the UMSON regional program located at the Universities at Shady Grove in Rockville, MD. Dr. Wiseman serves on the BOD of the National Nurse Managed Centers and is a Past-President of Pi Chapter, Sigma Theta Tau, International. She is a life-long member of the ANA.

---

**Teri Moser Woo, PhD, RN, CNL, CPNP**

*Associate Professor  
Director, Clinical Nurse Leader Program  
School of Nursing  
University of Portland  
5000 N Willamette Blvd. MSC 153  
Portland, OR 97203  
503.572.2574*



Dr. Woo completed her PhD at University of Colorado Denver College of Nursing in December 2008. She is the Director of the Clinical Nurse Leader program at University of Portland School of Nursing, where she teaches undergraduate pharmacology, NP pharmacology and the Clinical Nurse Leader clinical courses. She is co-author of *Pharmacotherapeutics for Nurse Practitioner Prescribers* (2007) and has written and lectured extensively in the area of pediatric pharmacology. She is currently serving as the only PNP member on the Eunice Kennedy Shriver National Institute of Child Health and Human Development (NICHD) 2009 Annual BPCA Scientific Prioritization committee. She was the 2001 Oregon Pediatric Nurse Practitioner of the Year and served on the Oregon State Board of Nursing Nurse Practitioner Formulary Committee for a number of years. Dr. Woo holds national certification as a Certified Pediatric Nurse Practitioner and Clinical Nurse Leader and still actively practices as a PNP in pediatric primary care and urgent care.

---

**Nancy L. York, PhD, RN, CNE**

*Assistant Professor of Nursing & Undergraduate Coordinator  
School of Nursing  
University of Nevada, Las Vegas  
4505 Maryland Parkway  
Box 453018  
Las Vegas, NV 89154  
nancy.york@unlv.edu  
702.895.5930*





Dr. York is an Assistant Professor and the Undergraduate Coordinator for the University of Nevada, Las Vegas School of Nursing. Her BSN and MSN degrees were earned at Southern Illinois University at Edwardsville and her PhD in Nursing earned from the University of Kentucky. Dr. York's leadership experiences include being the Undergraduate Department Chairperson at Bellarmine University in Louisville, Kentucky and the Undergraduate Coordinator at UNLV. As the coordinator, Dr. York provides leadership in academic program development and evaluation consistent with the mission, strategic goals and objectives of the School of Nursing. Her primary teaching responsibilities include critical care in the undergraduate program and Health Policy and Nursing Research courses in the graduate programs at UNLV. Dr. York's current research efforts focus on fostering healthy communities. Specifically, reducing tobacco use through evidence-based practice interventions and decreasing exposure to secondhand smoke (SHS) through voluntary and public policy development. She has presented her research findings at regional, national and international scientific conferences and has over 20 peer-reviewed publications. Dr. York has also published two textbook chapters. She serves on the Nevada Board of Nursing Educational Advisory Committee, reviews for both nursing and medical journals and is a member of Sigma Theta Tau (Past-President Lambda Psi chapter), Phi Kappa Phi, American Public Health Association, American Association of Critical Care Nurses and Western Institute of Nursing.