

NOT JUST A NUMBER

Getting to know your applicants through MMI.

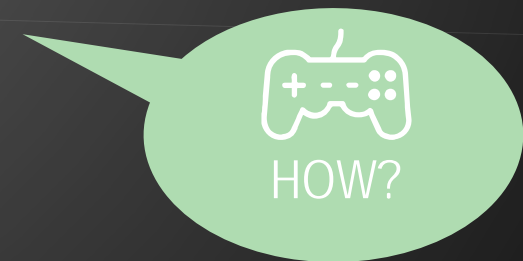
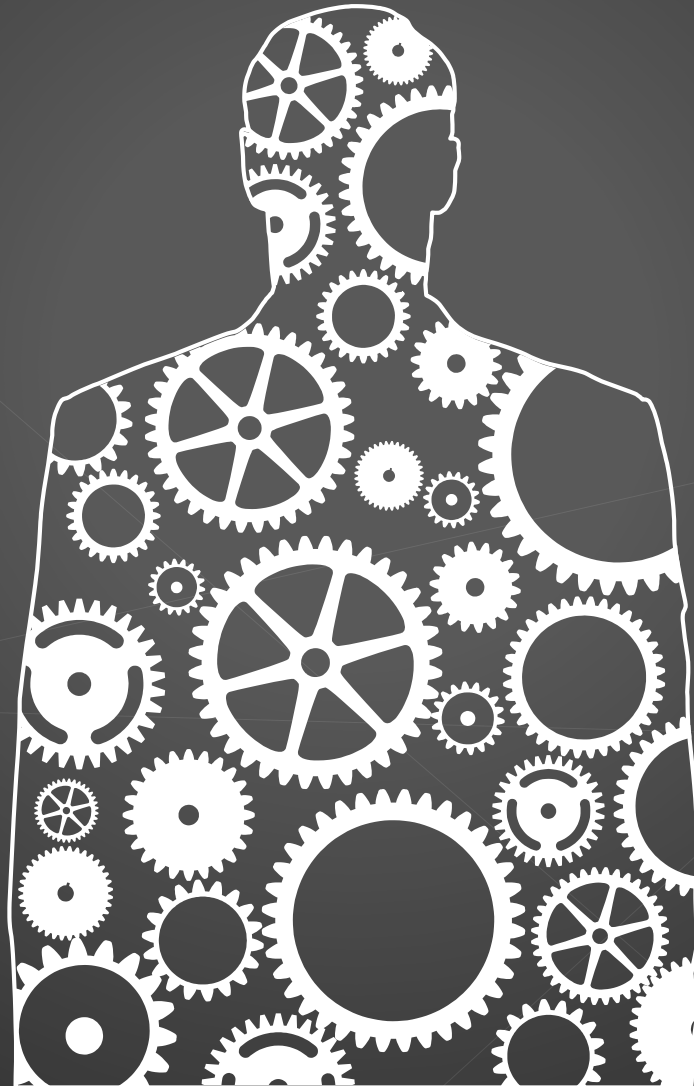


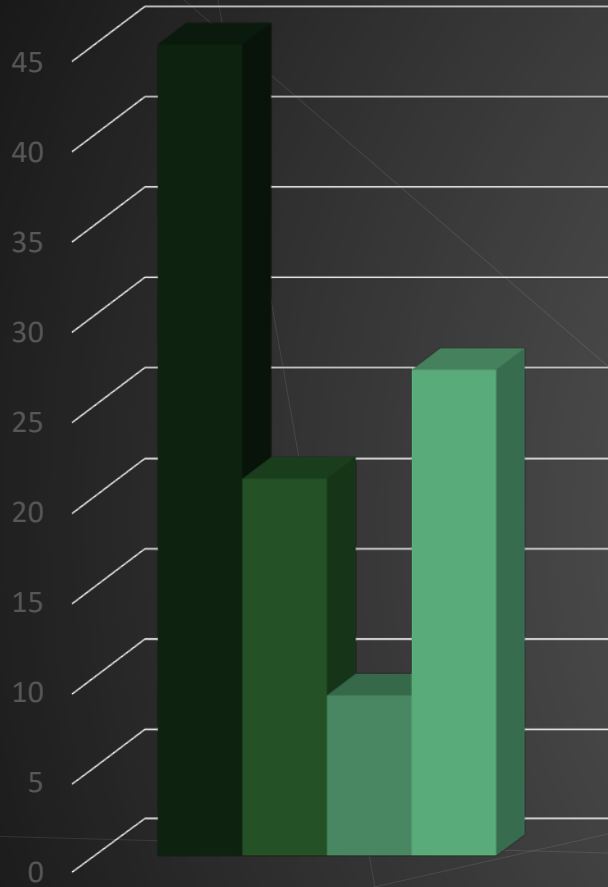
Ashley Sonke

Director of Nursing Admissions
California Baptist University

NOT JUST A NUMBER

Getting to know your applicants through MMI.

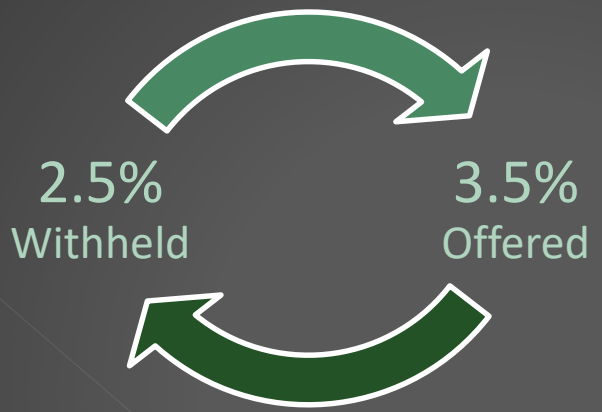




Ethnicity Breakdown

Hispanic Asian Black White

19% Male 81% Female



33%
Bilingual

36%
First Gen.



Holistic Review

Experiences – Attributes – Metrics

Essay

Background

Recommendations

Interviews

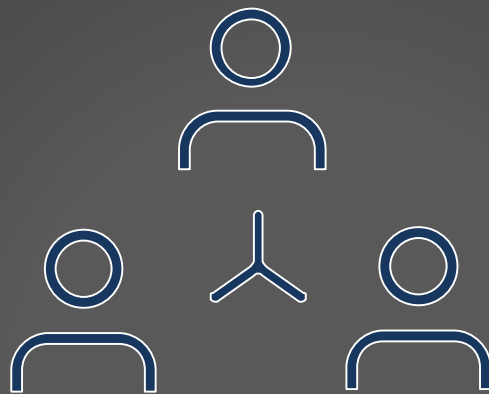


WHAT?



Admission Committee

Applicants



Faculty/Staff Volunteers



Goal 1:

Informative in Admissions Decisions

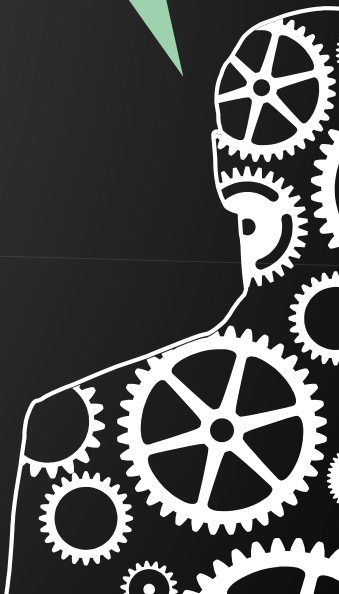
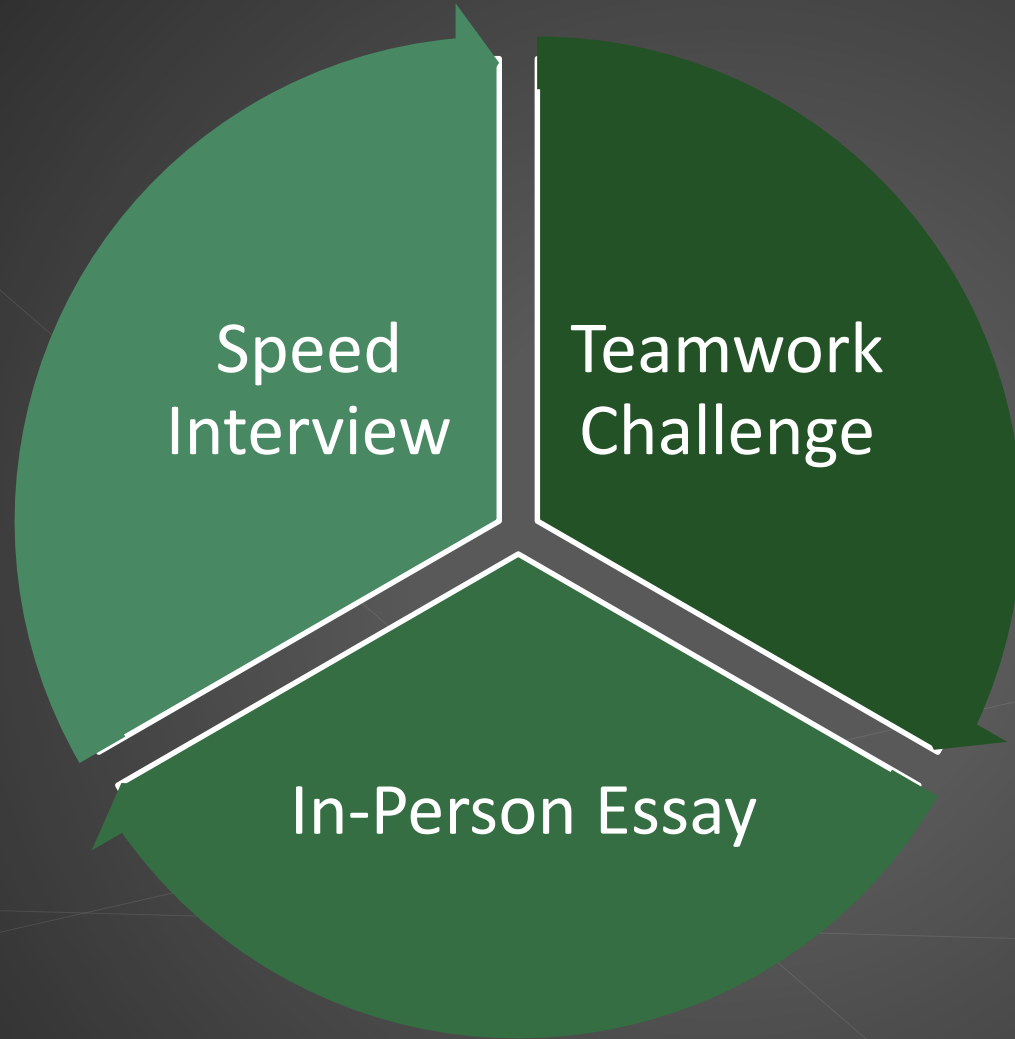


WHY?

Goal 2:

Fun for Applicants & Committee Members





NOT JUST A NUMBER

Getting to know your applicants through MMI.



Ashley Sonke

Director of Nursing Admissions
California Baptist University