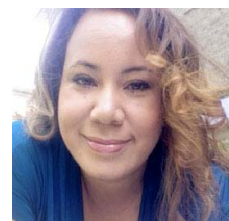


Johnson & Johnson Campaign for Nursing's Future – AACN Fall 2010 Minority Nurse Faculty Scholars



Willie M. Abel, MSN, RN, ACNS-BC, is a third-year PhD student at the University of North Carolina at Greensboro. Her research interests include reducing risky health behaviors in African Americans with cardiovascular disease and improving medication adherence in African American women with hypertension. Willie received a MSN from the University of North Carolina at Greensboro specializing in nursing administration and a BSN from the University of North Carolina at Charlotte. She also received a Post-Master's Graduate Certificate in Nursing Education from the University of North Carolina at Charlotte. Willie is a member of Sigma Theta Tau International, the Southern Nursing Research Society, the American Nurses Association, and Chi Eta Phi Sorority.

Lisa Carter-Harris, MSN, ARNP, ANP-C, is a second-year PhD student at the University of Louisville. She graduated in 1999 from Spalding University with her BSN and in 2004 from the University of Louisville with an MSN as an Adult Nurse Practitioner. Lisa has an advanced practice background in rheumatology and currently practices in geriatric rehabilitation. She has a special interest in culture and health disparities, and her research focuses on how culture affects healthcare decision-making as well as African-American women newly diagnosed with breast cancer. Lisa recently joined the faculty at Indiana University Southeast as a Clinical Assistant Professor. She is an active member of the Kentucky Coalition of Nurse Practitioners and Nurse Midwives, Sigma Theta Tau, Iota Gamma Chapter, the ANA, and AcademyHealth.



Carolyn Hickman, MS, RN, CPNP, is a third-year doctoral student at Arizona State University. She received a BSN from the University of South Carolina and a MS in nursing from Clemson University. She also received a Post-Master's Pediatric Nurse Practitioner Certificate from Arizona State University. Carolyn currently works as a Neurology Nurse Practitioner at Phoenix Children's Hospital. Her research interest is in the use of cognitive behavioral skills building interventions in teens with chronic daily headaches and mild depressive symptoms. She is also interested in research initiatives to reduce health disparities among children, teen, and families. Carolyn is an active member of Sigma Theta Tau, the National Association of Pediatric Nurse Practitioners, and the Association of Child Neurology Nurses.

Jimmy A. Reyes, DNP, MSN, RN, is a third-year PhD student at the University of Iowa. He received his BSN, MSN, Adult/Geriatric Nurse Practitioner, and DNP degrees from the University of Iowa. His research focuses on developing and piloting a culturally-anchored, family-focused educational partnership program to enhance diabetes self-management with an emphasis on nutrition for Hispanics with diabetes in Federally Qualified Health Centers. His career goals are to complete his PhD, obtain a post-doctorate degree and implement an efficacy study developed from data obtained from his dissertation, establish a funded program of research in diabetes, and become a faculty member at a research extensive university. Jimmy holds a leadership position at Sigma Theta Tau, Gamma Chapter, and volunteers at the Iowa City Free Medical Clinic.



Beverly Waller, MS, RN, is a second-year PhD student at the University of Michigan. She graduated with a Master of Science degree from the Nursing Business and Health Systems program at the University of Michigan with a focus in Healthcare Policy in 2008 and with a BSN from Eastern Michigan University in 1996. Beverly's current research interest focuses on patient-centered care and addressing individual needs of patients. She is a certified case manager and an active member of the Midwest Nursing Research Society and the American Nurses Association.