

# REBALANCING THE BSN CURRICULA TO ADVANCE THE SPECIALTY OF PRIMARY CARE NURSING

J. Dwayne Hooks Jr., PhD, APRN, FNP-BC, NEA-BC, AAHIVS, FACHE, FAANP<sup>1</sup>

<sup>1</sup>Center for Strategic Initiatives, Augusta University College of Nursing



AUGUSTA UNIVERSITY  
COLLEGE OF NURSING

**THE PRESENTER HAS NO CONFLICTS OF INTERESTS TO DISCLOSE**

# PURPOSE

Guide participants through the systematic process a southeastern College of Nursing is taking to advance the primary care nursing specialty

# OBJECTIVE

At the end of this presentation, participants will be able to:

- Discuss three key elements of an academic systematic process to re-balance the BSN curricula to advance the specialty of primary care nursing

# Augusta University College of Nursing

- Flagship nursing program for the University System of Georgia; founded in 1943
- Programs offered: 3-year BSN, 4-year BSN, Masters-entry CNL<sup>1</sup>, Post-graduate certificate programs, DNP<sup>2</sup>, & PhD
- Alumni – 13,593
- Enrollments – 982 (Fall 2019)

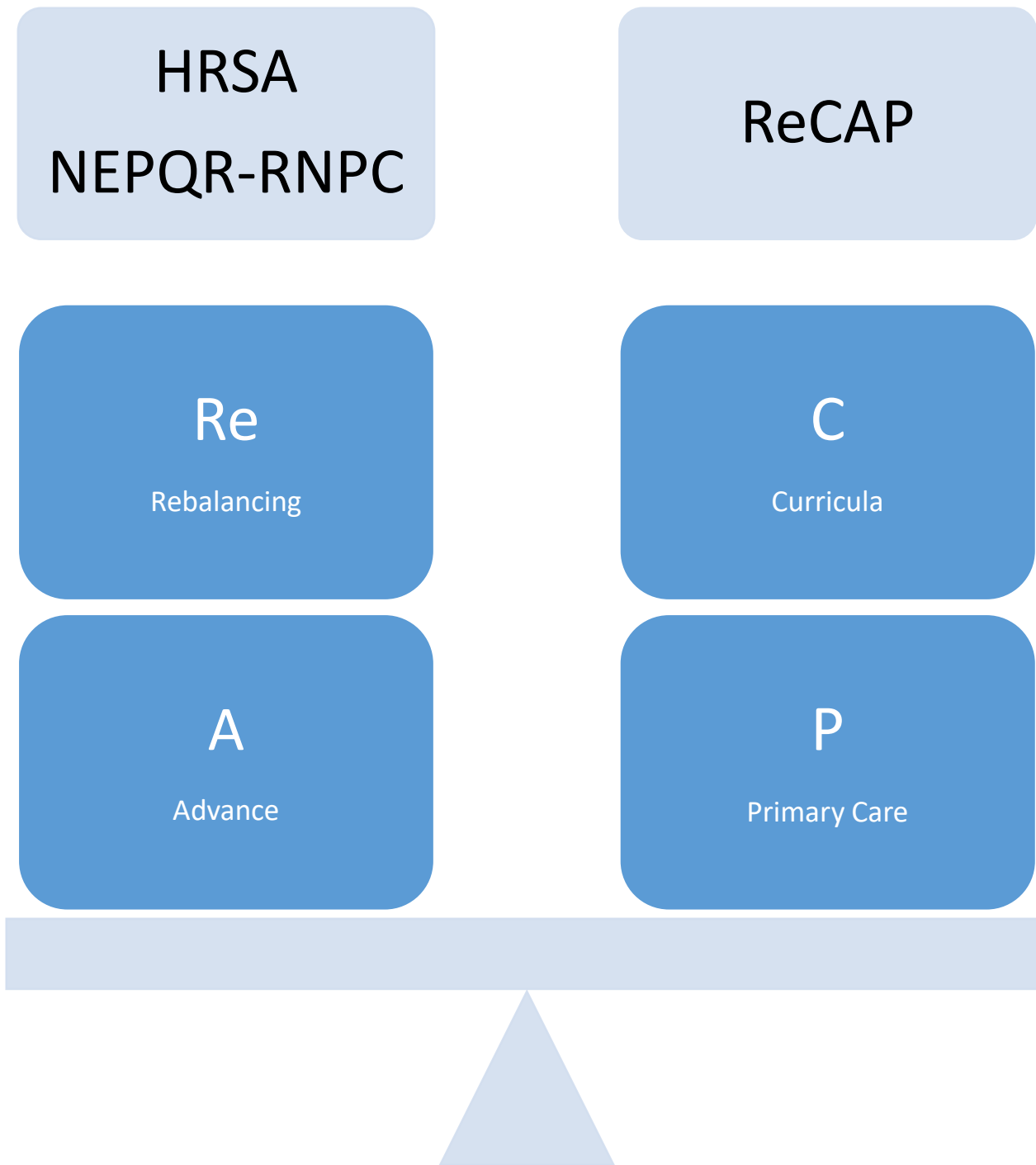
(<sup>1</sup>Ranked 4<sup>th</sup>; <sup>2</sup>1<sup>st</sup> in Georgia)

<https://www.augusta.edu/nursing/>



AUGUSTA UNIVERSITY  
COLLEGE OF NURSING

# OUR PROJECT

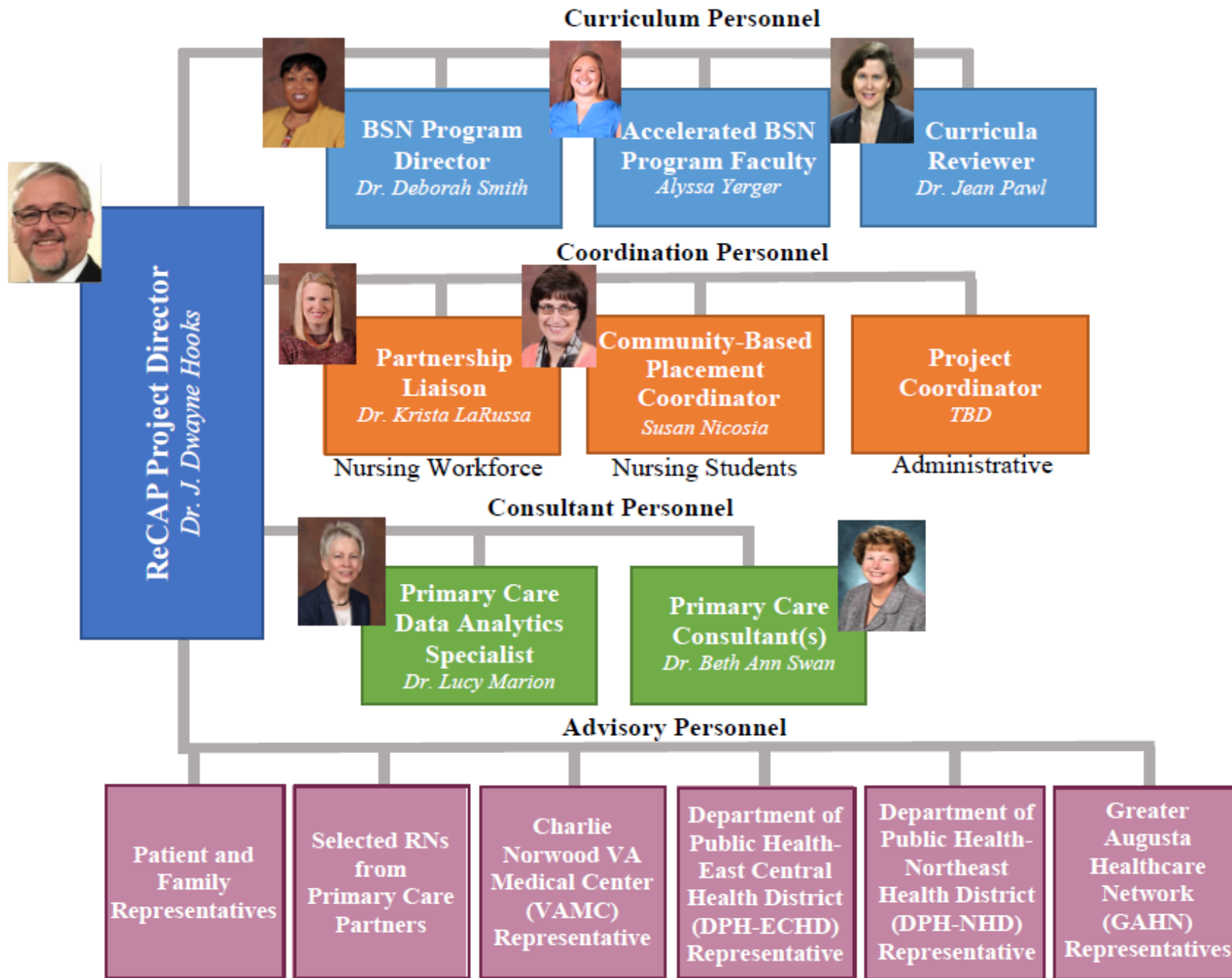


## OUR TEAM

# ReCAP Team Members

- Dwayne Hooks, PhD, APRN, FNP-BC, NEA-BC, AAHIVS, FACHE, FAANP
- Jean Pawl, PhD, RN, OCN, CNE
- Deborah Smith, DNP, RN
- Alyssa Yerger, MSN, RN
- Krista LaRussa, DNP, RN
- Susan Nicosia, MSN, RN, NEA-BC
- Lucy Marion, PhD, RN, FAANP, FAAN
- Academic-Practice Partners
- Faculty, Staff, Students, & Consultants

# ReCAP Organizational Chart





# Background

- Healthcare system continues to rapidly change
  - Higher acuity in the ambulatory care environment
- Need for registered nurses in the primary care space well documented
- Most new graduates elect to work in acute care settings
  - Influenced by the lack of didactic and experiential clinical training in this area
  - Impacted by faculty guidance



# Background

- Of Georgia's 159 counties:
  - 31 have no internal medicine physicians
  - 6 have no family physicians
  - 129 counties are primary care health professions shortage areas
- Georgia ranks 41<sup>st</sup> in terms of “overall health”
- Higher than average death rates from diabetes, heart disease, and HIV
- Maternal mortality crisis



# Program Aims

- Improve access to care and population health outcomes by strengthening the capacity for basic nursing education and practice addressing:
  - Education
  - Practice
  - Retention
- Achieve a sustainable primary care nursing workforce
- Even the distribution of the nursing workforce to increase number practicing in primary/ambulatory care environments



Enhance curricular components and clinical training

Recruit, select, train and graduate practice-ready nurses

**Measurable Objectives**

Create and sustain at least three academic-practice partnerships

Assess the registered nurse workforce currently practicing within clinical partner agencies



## CURRICULA

# Rebalance the Curricula

- ▶ Reviewed each course & complete detailed mapping exercise
- ▶ Presented mapping findings at Faculty Forums
- ▶ Conducted faculty presentations of primary care content & gaps

**Augusta University**  
**College of Nursing**  
**Bachelor of Science in Nursing**  
**Curriculum Mapping**  
**Fall XXXX-Spring XXXX**

**Course Number and Course Title**  
**Semester/Year**

**Course Description:**

**Prerequisites:**

**Course Credits:**

**Clinical/Practicum Hours:**

**Delivery Method:**

**Co-requisites:**

**Teaching/Learning  
Methods:**

**Required Textbooks/Course Resources:**

**Recommended Textbooks/Course Resources:**

Student Learning Outcome(s)	Course Objectives	The Essentials of Baccalaureate Education for Professional Nursing Practice <sup>1</sup>	NCLEX-RN Examination Test Plan <sup>2</sup>	Other Source for Mapping (CARITAS (C), Primary Care (P), Trauma-informed Care (T), etc.)

Course Objectives	Course Content	Assessments

References

## ACADEMIC - PRACTICE PARTNERSHIPS

# Develop and Advance Academic- Practice Partnerships

- ▶ Expand existing academic-practice partnerships to include primary/ambulatory care settings
- ▶ Create new academic-practice partnerships
- ▶ Focus on innovations: interprofessional care teams, telehealth, population health focus, school-based care teams

# ReCAP Academic- Practice Partnerships





# ReCAP Partnership Vision, Mission & Values

## Vision

Elevate the specialty practice of ambulatory care nursing in our region

## Mission

To cultivate interest and develop skills of BSN nursing students to work in team-based ambulatory care settings through engaged community partnerships

## Values

We believe we have a responsibility to...

## Values

We believe we have a responsibility to...

- to introduce nursing students to ambulatory care settings;
- to have a comprehensive curricula that showcases non-acute care environments, with special focus on ambulatory care settings;
- to provide developmental opportunities for faculty, preceptors, and staff;
- to create mutually beneficial partnerships that advance primary care nursing by contributing to the professional development of registered nurses practicing in ambulatory care settings.



# Creating Capacity by Building Primary Care Awareness

## BUILDING PRIMARY CARE AWARENESS

- ▶ Faculty and Preceptor Development
- ▶ Partnership Needs Assessment of Primary Care RNs
- ▶ Independent Study in Primary Care Nursing & Immersion in Primary Care Nursing
  - ▶ NURS 3500/4501 & 3808

### Curricula

- Comprehensive mapping
- Faculty awareness
- Faculty engagement

### Academic- Practice Partnerships

- Expand existing partnerships
- Create new partnerships
- Focus on innovative primary care practices

### Building Primary Care Capacity

- Faculty & Preceptor development
- Immersion experiences
- Needs assessment



# Contact Information & Discussion

Dwayne Hooks, PhD, APRN, FNP-BC, NEA-BC, AAHIVS, FACHE, FAANP

706-721-3290 (office)

706-231-0840 (mobile)

[jhooks@augusta.edu](mailto:jhooks@augusta.edu)



AUGUSTA UNIVERSITY

COLLEGE OF NURSING

# Disclaimer

*“This ReCAP Project is supported by the Health Resources and Services Administration (HRSA) of the U.S. Department of Health and Human Services (HHS) as part of an award totaling \$2.313 million dollars. The contents are those of the author(s) and do not necessarily represent the official views of, nor an endorsement, by HRSA, HHS or the U.S. Government.”*



# References

- America's Health Rankings. (2017). Retrieved from <https://www.americashealthrankings.org/explore/2017-annual-report/state/GA>
- America's Health Rankings: Annual Report (Rep.). (2017). United Health Foundation. Retrieved from [https://assets.americashealthrankings.org/app/uploads/ahrannual17\\_complete-121817.pdf](https://assets.americashealthrankings.org/app/uploads/ahrannual17_complete-121817.pdf).
- Christ Community Health Services Augusta Health Center 2016 Profile. (n.d.). <https://bphc.hrsa.gov/uds/datacenter.aspx?q=d&bid=04E00516&state=GA&year=2016>
- East Central Health District. (2018). <http://ecphd.com/>



# References

- Georgia Department of Public Health (2017). <https://dph.georgia.gov/chronic-disease-prevention>
- Georgia Department of Public Health: Georgia HIV Care Continuum Update: Persons Living with HIV, 2016, and Persons Diagnosed with HIV, 2015 (Rep.). (2016).
- Institute of Medicine. (2011). The future of nursing: leading change, advancing health, National Academies Press, Washington  
[http://www.nap.edu/catalog.php?record\\_id=12956](http://www.nap.edu/catalog.php?record_id=12956)
- National Center for Health Statistics. (2018, January 10). Retrieved January 18, 2018, from <https://www.cdc.gov/nchs/products/databriefs.htm>
- Robinson, J. (2017). Public Health Nursing Workforce Data FY 2017 (Rep.). GA.
- Serenity Behavioral Health Systems. (2017, October 18).  
<http://www.serenitybhs.com>





# References

- Start, R., Matlock, A.M., & Mastal, P. (2016). Ambulatory Care Nurse-Sensitive Indicator Industry Report: Meaningful Measurement of Nursing in the Ambulatory Patient Care Environment. Pitman, NJ: American Academy of Ambulatory Care Nursing.
- The State of Obesity in Georgia. (2017). Retrieved January 20, 2018, from <https://stateofobesity.org/states/ga>
- U.S. Department of Health and Human Services, Health Resources and Services Administration, National Center for Health Workforce Analysis. (2017). National and Regional Supply and Demand Projections of the Nursing Workforce: 2014-2030. Rockville, Maryland.
- United States Census Bureau (2017). <http://www.census.gov/quickfacts/table/PST045216/00>
- United States Department of Labor: Bureau of Labor Statistics (2017). <https://www.bls.gov/bls/proghome.htm#unemployment>
- United States, Health Resources and Services Administration. (2017). Nurse Education, Practice, Quality and Retention (NEPQR) – Registered Nurses in Primary Care (RNPC) Training Program Notice of Funding Opportunity (pp. 1-32).

