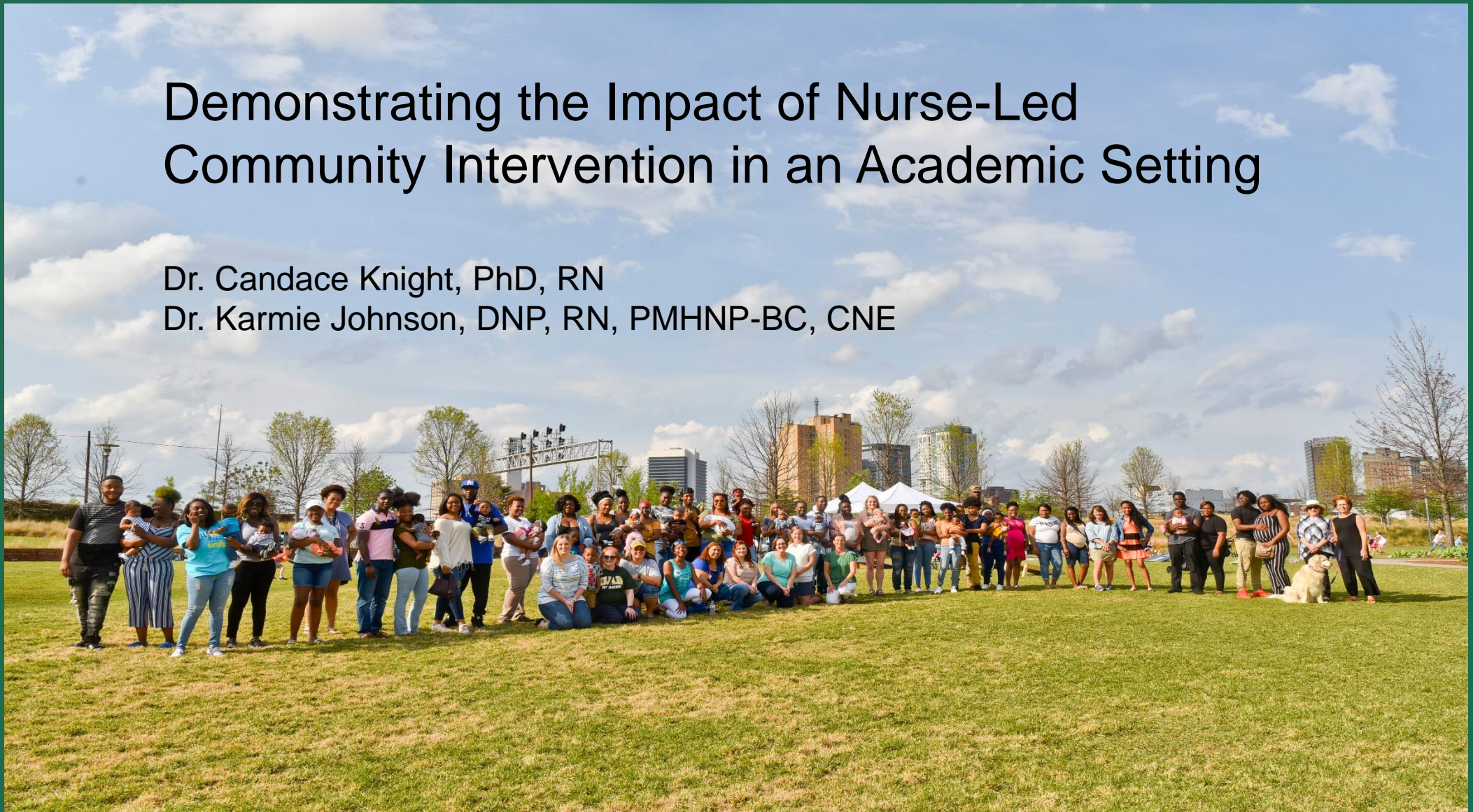


Demonstrating the Impact of Nurse-Led Community Intervention in an Academic Setting

Dr. Candace Knight, PhD, RN

Dr. Karmie Johnson, DNP, RN, PMHNP-BC, CNE





NFP of Central Alabama:
An academic practice partnership through
the Office of Clinical and Global Partnerships
at the UABSON

Funded by:

Jefferson County Department of Health

Goodrich Foundation

Daniel Foundation

Community Foundation of Greater Birmingham

Blue Cross/Blue Shield of Alabama Caring

Foundation

Alabama Dept. of Early Childhood Education

Maternal Infant Early Childhood Home Visiting

Department of Human Resources

Walker Area Community Foundation

Birmingham Talks and the Overton Project

NFP BACKGROUND

- Dr. David Olds research in Elmira, NY, Memphis, TN and Denver, CO
- Over 40 years evidence of effectiveness
- National scaling of the model
- Launch of NFP of Central Alabama in October 2017





NFP Goals

Improve Pregnancy Outcomes

Improve Child Health
and Development

Improve Economic
Self-Sufficiency of the Family

SCHOOL OF NURSING IMPACT

- Faculty Practice Opportunities
 - PhD, DNP
 - Scholarship/Pracice
- Grant Opportunities
 - HRSA, MIECHV, State, Philanthropy
- Student clinical and internship opportunities
 - Over 300 prelicensure clinical visits annually
 - Assessment, reflection, resource identification with vulnerable population
 - Inter-professional collaboration
 - Social work, Dentistry, Medicine

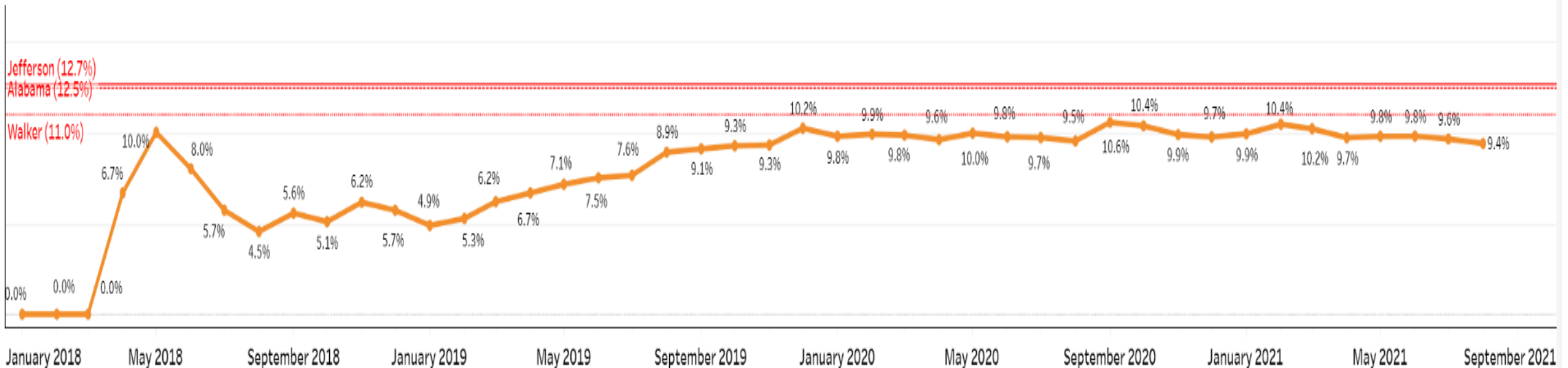


COMMUNITY IMPACT

• Preterm Birth

- Jefferson County: cumulative 9.3%
- Walker/Fayette: cumulative 9.7%
- Combined NFPCA, cumulative 9.4%, trending slightly downward

NFPCA Cumulative Preterm Birth Percentage by Month

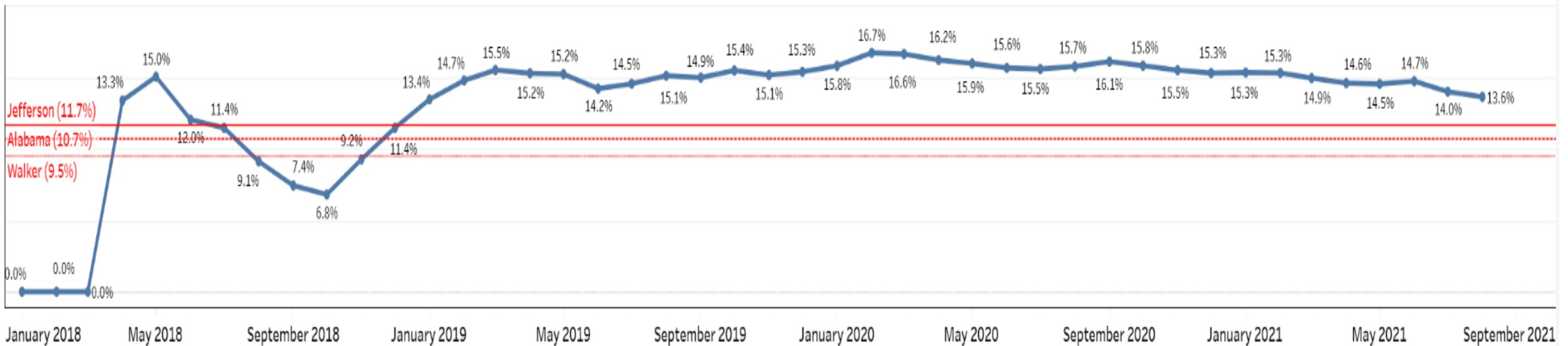


COMMUNITY IMPACT

- **Low birth weight**

- Jefferson County: cumulative 14.8%
- Walker/Fayette: cumulative 9.7%
- Combined NFPCA: cumulative 13.6%, trending downward from 2020

NFPCA Cumulative LBW Percentage by Month



COMMUNITY IMPACT

Disparity between urban and rural populations

- **Walker team**
 - Anxiety screening, **43%** high score
 - 69% improved on most recent
 - Depression screening, **37%** high score
 - 82% improved on most recent

- **Jefferson team**
 - Anxiety screening, **22%** high score
 - 85% improved on most recent
 - Depression screening, **17%** high score
 - 78% improved on most recent

QUESTIONS/DISCUSSION

We cannot force someone to hear a message they are not ready to receive, but we must never underestimate the power of planting a seed.

