

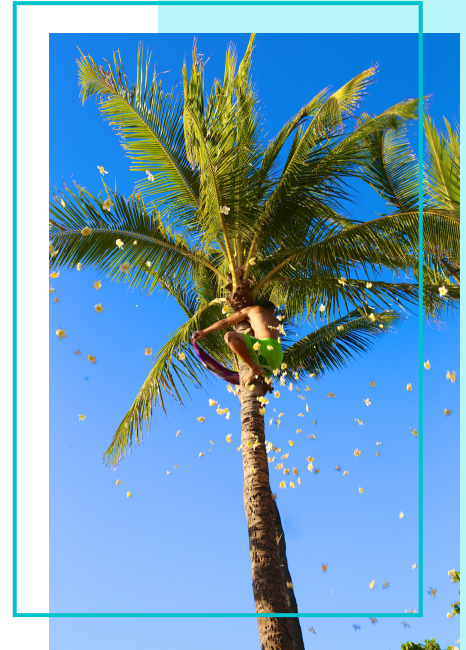
SINCE 2000

ELNEC

END-OF-LIFE NURSING EDUCATION CONSORTIUM

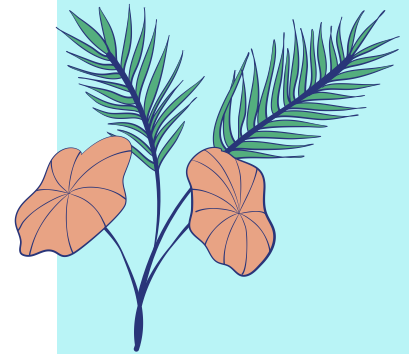
Hawaiï

APRIL 20-21, 2023



ELNEC SUMMIT

WAIKOLOA, HAWAII



COURSES OFFERED:

- APRN ADULT
- APRN PEDIATRIC
- CORE
- PEDIATRICS
- COMMUNICATION



WWW.AACNNURSING.ORG/ELNEC/COURSES

Advancing Palliative Care

ABOUT ELNEC

The End-of-Life Nursing Education Consortium (ELNEC) project is a national and international education initiative to improve palliative care, in collaboration with City of Hope in Duarte, CA. and the American Association of Colleges of Nursing (AACN) in Washington, DC. The project provides training in palliative care with essential information to nursing students and practicing nurses, including undergraduate and graduate nursing faculty, continuing education providers, staff development educators, specialty nurses in pediatrics, oncology, critical care, geriatrics, and advanced practice nurses. ELNEC also welcomes other health care professionals.

Want to learn more about ELNEC? Visit www.aacnnursing.org/ELNEC or join our social media.



ELNEC SUMMIT OVERVIEW

The summit offers multiple courses simultaneously. Participants choose one course to attend.

Intended Audience for APRN Adult & APRN Pediatric

Masters, PhD, or DNP prepared APRNs (nurse practitioners, clinical nurse specialists, midwives, and nurse anesthetists).

Intended Audience for Communication, Core, Pediatric

While ELNEC is developed by nurses for nurses, we welcome all nurses, social workers, physicians, chaplains, and volunteers etc., who have an interest in palliative care.



CONFERENCE PRICING

April 20-21, 2023	EARLY BIRD Ends February 20 th	STANDARD Ends March 31 st	LATE REGISTRATION
APRN Adult	\$675	\$725	\$775
APRN Pediatric			
Communication	\$575	\$625	\$675
Core			
Pediatric			

Additional Discounts:

- **Schools of Nursing (SON) Faculty: \$100 off when code **SONFACULTY** is applied**
- **\$50 off each registration, if 3 or more colleagues attend from:**
Choose One Option
 1. The same institution
 2. The same professional nursing organization (AACN, HPNA, NBNA, ONS, etc.)Email elnec@coh.org for a discount code. You will need to provide the names of the colleagues attending with you.

CE Information

Provider approved by the California Board of Registered Nursing, BRN Provider #: CEP 13380 for **12 contact hours*** for Summit courses (CE Provider: City of Hope National Medical Center/Beckman Research Institute).

*subject to change & must be present all days to receive CEs

REGISTER HERE

COVID-19 POLICY Update as of Feb 2022:

It is our responsibility to hold safe events and to follow local, national, and City of Hope policies and guidelines. With that being said, we will be enforcing a COVID-19 policy at the course. All participants will be required to verify proof of vaccination and agree to wear an N-95 mask during the course. Boosters are not needed.

People are considered fully vaccinated for COVID-19 two weeks or more after they have received the second dose in a two-dose series (Pfizer-BioNTech or Moderna), two weeks or more after they have received a single-dose vaccine (Johnson and Johnson [J&J]/Janssen), or two weeks after receipt of another vaccine authorized by WHO.

Policies are subject to change.

Deadline to provide verification is 4/19/23, by 5PM HST. You can email a photo of vaccination proof to ELNEC@coh.org and please add your name and course that you are attending.

If you have medical or religious exemptions, we encourage you to take our ELNEC online courses:

<https://www.aacnnursing.org/ELNEC/Courses>

ELNEC FACULTY

Vanessa Battista, MS, RN, CPNP

Senior Nursing Director, Palliative Care
Dana Farber Cancer Institute
Boston, MA

Patrick J. Coyne, MSN, ACHPN, ACNS-BC, FPCN, FAAN

Clinical Nurse Specialist, Assistant Professor
Director, Palliative Care
Medical University of South Carolina
Charleston, SC

Andra Davis, PhD, MN, RN

Associate Professor
University of Portland, School of Nursing and Health
Innovations
Portland, OR

Betty Ferrell, PhD, RN, MA, FAAN, FPCN, CHPN

Principal Investigator, ELNEC Project
Director, Nursing Research & Education
City of Hope
Duarte, CA

Megan Pfitzinger Lippe, PhD, MSN, RN

Associate Professor
University of Texas
Health Science Center
San Antonio, TX

Diane Parker, MSN, RN, CHPN, CHPPN

Chief Executive Officer
Palladium Hospice and Palliative Care
Columbia, SC

Dorothy Wholihan, DNP, AGPCNP-BC, ACHPN, FAAN

Special Projects Coordinator/Nurse Practitioner
JJ Peters Veteran's Medical Center
Clinical Associate Professor
New York University
New York, NY

Haley Buller, MSHSC

ICC Project Director
Administrative Program Manager
City of Hope
Duarte, CA

Connie Dahlin, APRN-BC, ACHPN®, FPCN, FAAN

Director, Professional Practice
Palliative Care Consultant
Hospice and Palliative Nurses Association
Boston, MA

Laura Fennimore, DNP, RN, NEA-BC

Professor of Nursing
University of Pittsburgh
School of Nursing
Pittsburgh, PA

Amy Haskamp, MSN, RN, PCNS-BC, CPON®

Pediatric Palliative Care
Riley Hospital for Children at IU Health Hospital
Indianapolis, IN

Judith Paice, PhD, RN, FAAN

Director, Cancer Pain Program
Northwestern University Feinberg,
School of Medicine
Chicago, IL

Karla Schroeder, DNP, RN, MHA, ANP-BC, NE-BC

Director of Patient Care Practice
Emory Health Care
Atlanta, GA

CONFERENCE CENTER & ACCOMODATIONS

Conference Center

Waikoloa Beach Marriott Resort & Spa
69-275 Waikoloa Beach Drive
Waikoloa, HI 96738-5711
(808) 886-6789

Hotel Reservations

Hotel and travel expenses are the responsibility of the participant. A block of rooms at a discounted rate have been reserved at the Waikoloa Beach Marriott Resort & Spa. The Waikoloa Beach Marriott is pleased to offer the use of our online group reservations system powered by Passkey, the link will be provided upon registration completion. All reservations will be made, modified or canceled through Passkey.

Rates for rooms are **\$269/night** (exclusive of taxes and additional fees) – traditional singles/doubles. Rates are available at a first come, first served basis, or until rooms have been filled. Reservations must be made by **March 20th** to receive the discounted rate, upon availability/full room block.

Note: When making your reservations, per hotel policy, individuals must provide a valid credit card at time of booking.

Things to do While Visiting the Area

Check out the area attractions, entertainment, shopping and other activities around the hotel by visiting <https://www.marriott.com/en-us/hotels/koamc-waikoloa-beach-marriott-resort-and-spa/experiences/>. Take advantage of networking with fellow healthcare providers while sightseeing before or after the conference sessions.

CONFERENCE AGENDA

Day One: Thursday, April 20, 2023 – 8:00AM – 4:30PM HST

Communication	Core	Pediatric	APRN Adult	APRN Pediatric
Registration & Breakfast				
Welcome & Overview: Communication Training and Coaching Across the Domains	Welcome & Introductions			
	Introduction to Palliative Nursing			
Domain 2: Physical Aspects of Care (Pain and Symptoms)	Leadership			
Lab Session: Physical Aspects of Care	Review of Materials			
	Pain	Communication	Pain	Pain
Domain 3: Psychological and Psychiatric Aspects of Care				
Lab Session: Psychological and Psychiatric Aspects of Care	Communication	Loss, Grief & Bereavement	Communication Lab I: Breaking Bad News: Family Meeting	Communication Lab I: Breaking Bad News: Family Meeting
Domain 4: Social Aspects of Care	Loss, Grief, Bereavement	Self-Care	Communication Lab II: APRN speaking to physician who is resistant to PC	Communication Lab II: APRN speaking to physician who is resistant to PC
Lab Session: Teaching Communication Skills for Social Aspects of Care	Self-Care	Symptom	Final Hours	Final Hours
	Review Analgesia/Adult			

Day Two: Friday, April 21, 2023 – 8:00AM – 4:15PM HST

Communication	Core	Pediatric	APRN Adult	APRN Pediatric
Registration & Breakfast				
Domain 6: Cultural Aspects of Care	Culture		Symptoms	
Domain 5: Spiritual, Religious and Existential Aspects of Care	Symptoms Part I	Pain Part I	Opportunities for “Generalists” and “Specialists”	
Lab Session: Cultural Aspects of Care and Spiritual, Religious and Existential Aspects of Care	Symptoms Part II	Pain Part II	Choose 1 of three offerings: <ol style="list-style-type: none"> 1. Review Case Studies Related to Pain/Symptoms (Adult) 2. Review Case Studies Related to Pain/Symptoms (Pediatric) 3. Supporting & Justifying Your Role (Opportunities for ‘Generalists’ & ‘Specialists’) 	
Domain 7: Care of the Patient Nearing the End of Life Lab Session: Care of the Patient Nearing the End of Life	Role Play	Ethics	Choose 1 of four offerings: <ol style="list-style-type: none"> 1. Program Development and Maintenance 2. Community-Based Practice 3. Review Equianalgesia (Adult) 4. Review Equianalgesia (Pediatric) 	
Lab Session: Communication Coaching	Ethics	Neonatal	Choose 2 of three offerings <ol style="list-style-type: none"> 1. Improving Quality in Palliative Care Across Healthcare Settings 2. Nuts & Bolts of Palliative APRN Role Development & Clinical Leadership 3. Developing Pediatric PC Programs 	
Domain 8: Ethical and Legal Aspects of Care	Final Hours			
Where Do We Go from Here? & Blessing of the Hands				